



European Commission

With the cooperation of the European Commission

ERASMUS+ Barometer 2015

2014-2015 Academic Year Survey Results

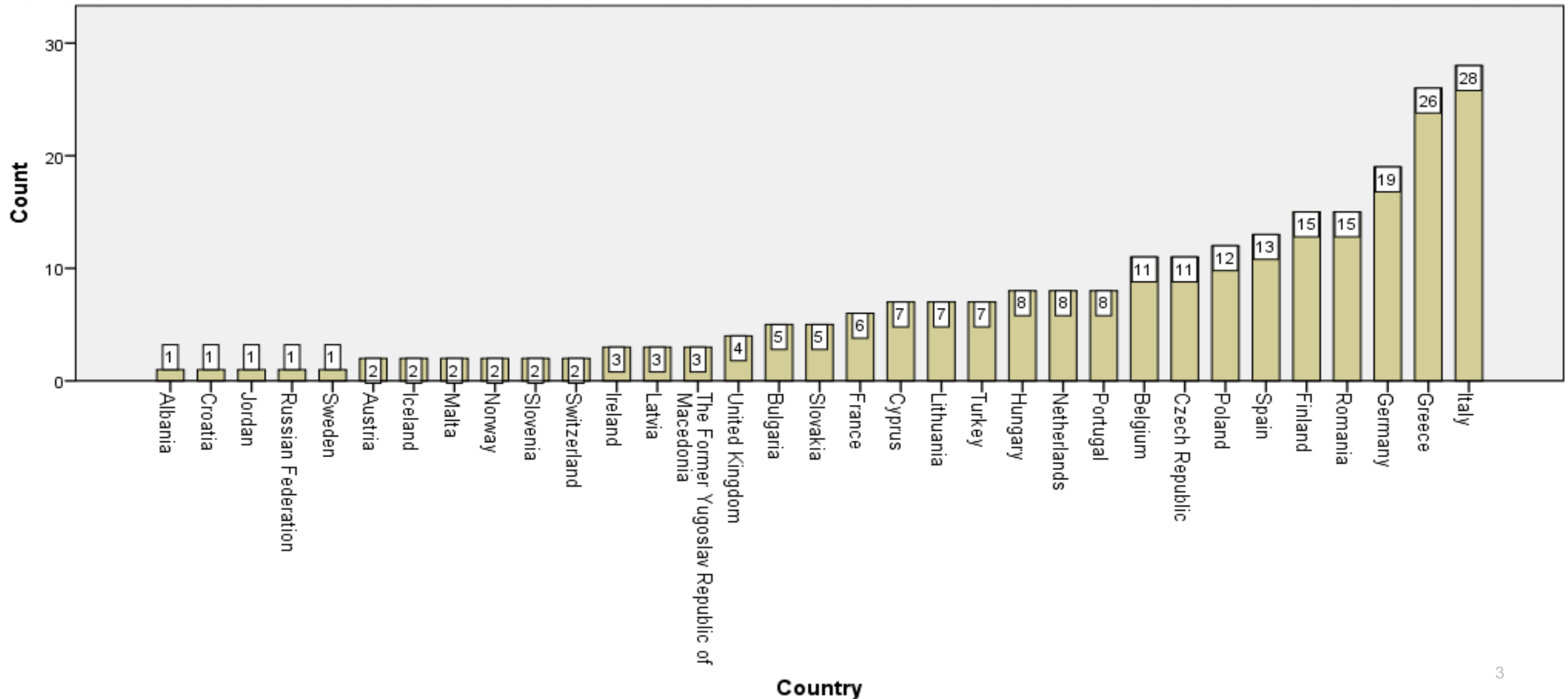
Presented by Dr Gregory Makrides, EAEC President

European Association
E A of E C
Erasmus Coordinators

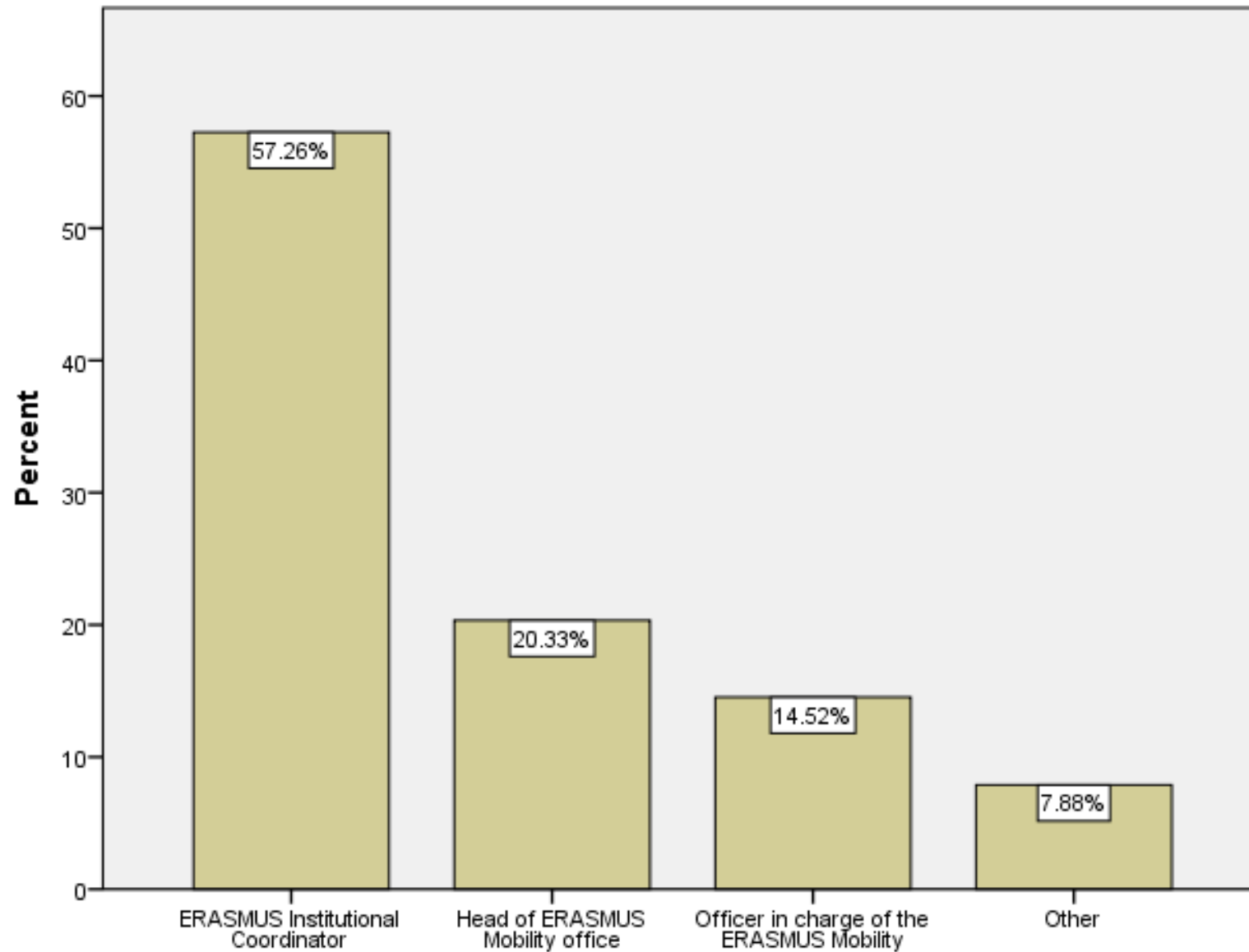


SURVEY DEMOGRAPHICS

- The survey took place online via the erasmusbarometer.net website between October 2015 and January 2016. The survey results consist of **241** full responses to the questionnaire from **33 different countries**.



- Participants of the online survey are:



A3. Position within Institution:

- Number of Students registered:

	Minimum	Maximum	Mean	Std. Deviation
Number of students registered in 2014-2015 Academic Year: [First Cycle]	101	102404	9721.62	12456.047
Number of students registered in 2014-2015 Academic Year: [Second Cycle]	102	21549	2958.96	3909.418
Number of students registered in 2014-2015 Academic Year: [Third Cycle]	101	13953	700.01	1461.228

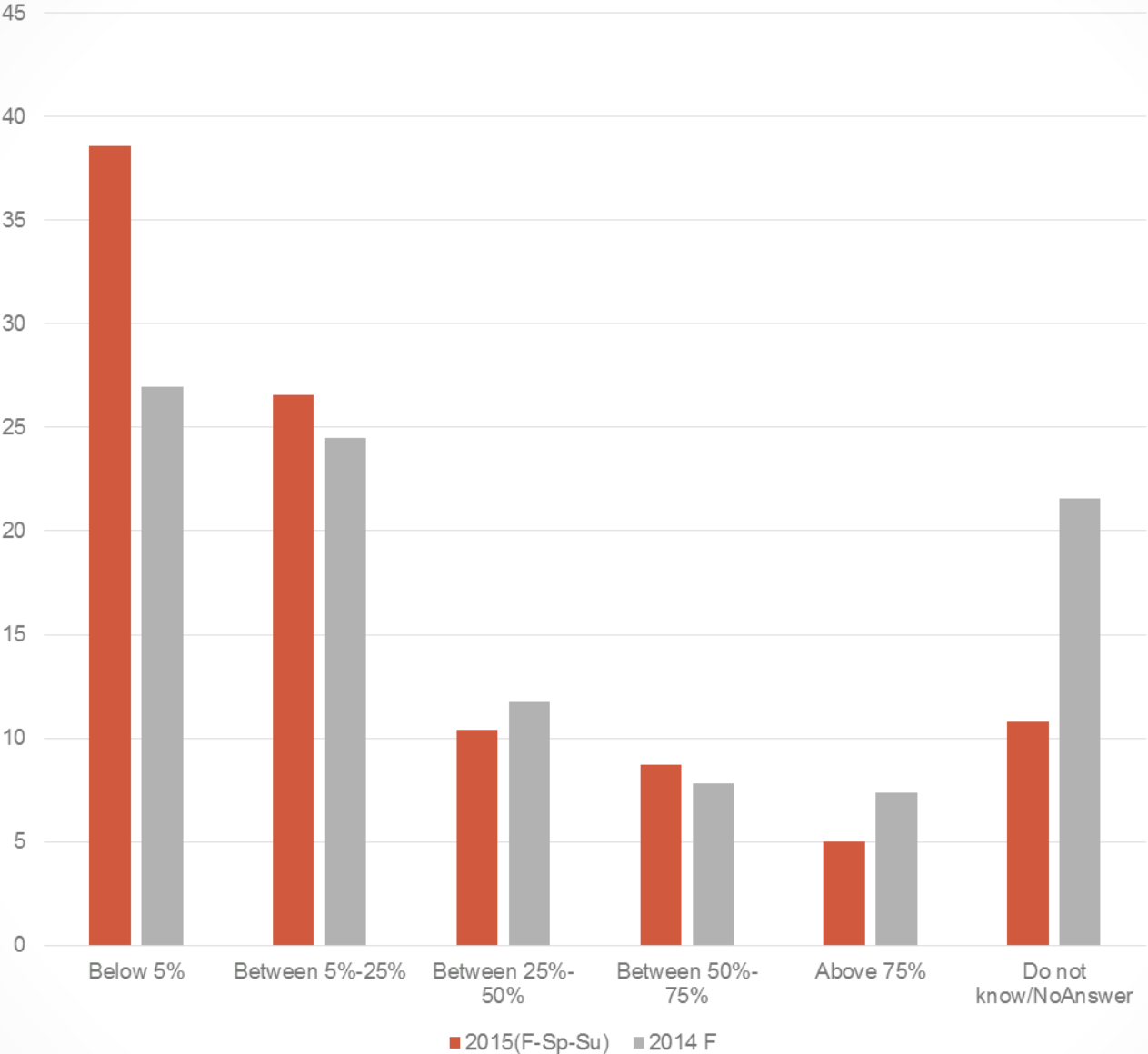
- Number of ERASMUS realized mobilities in the Academic Year 2014-2015, including the summer:

	Minimum	Maximum	Mean	Std. Deviation
Number of ERASMUS realized mobilities in the Academic Year 2014-2015, including the summer of 2015: [SMS (studies):]	11	1036	200.17	212.883
Number of ERASMUS realized mobilities in the Academic Year 2014-2015, including the summer of 2015: [SMP (traineeships):]	12	274	63.35	48.040

B1.MOBILITY BETWEEN PROGRAMME COUNTRIES

B1.1. Evaluate the interest of students in your institution to undertake a traineeship as recent graduates

Total

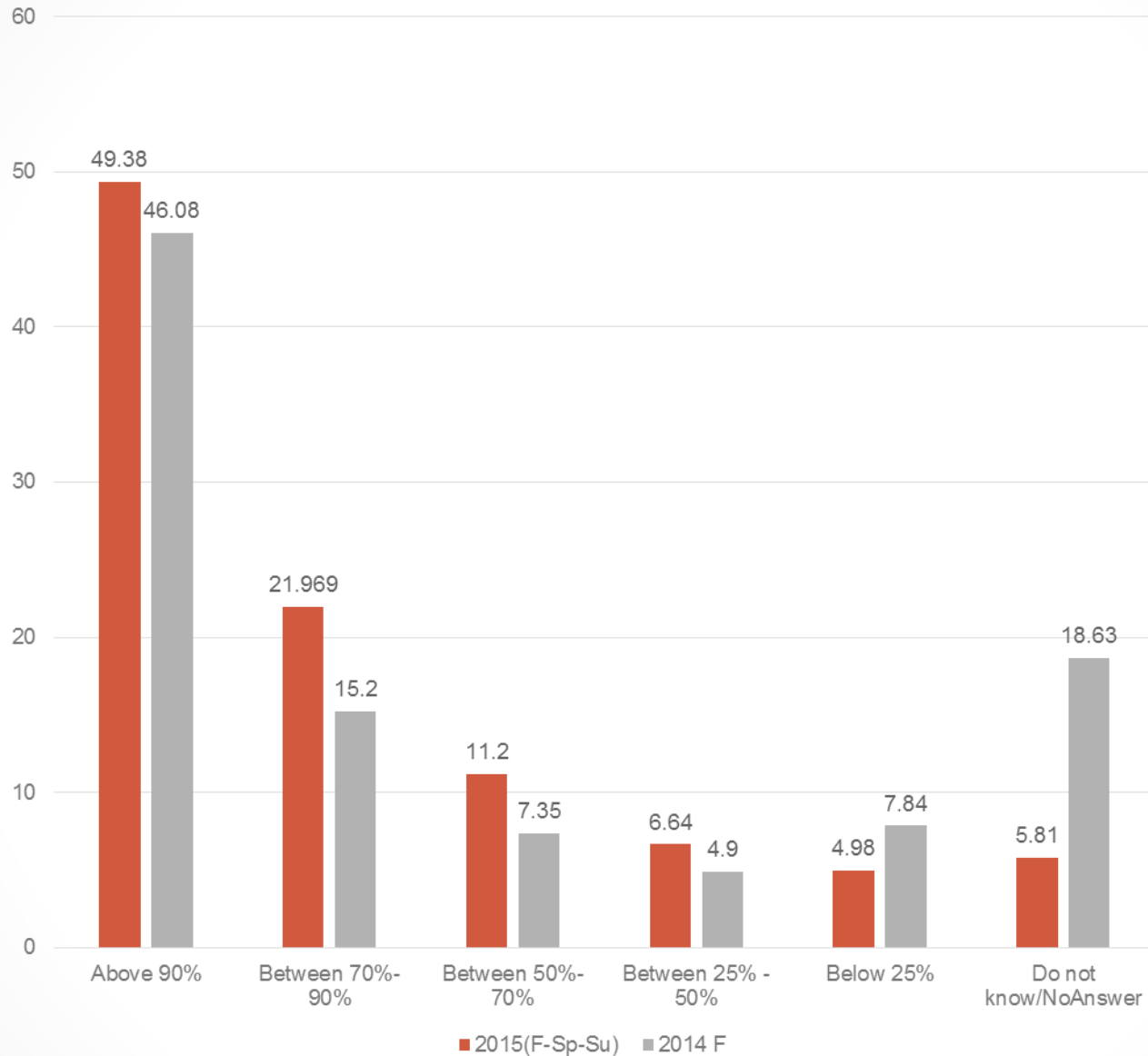


	Frequency	Percent
Do not know - No answer	19	7.9
No	202	83.8
Yes	20	8.3
Total	241	100.0

B1.2. Has your institution received more demands from participants with special needs (SMS and SMP) under the 2014 call compared the previous calls?

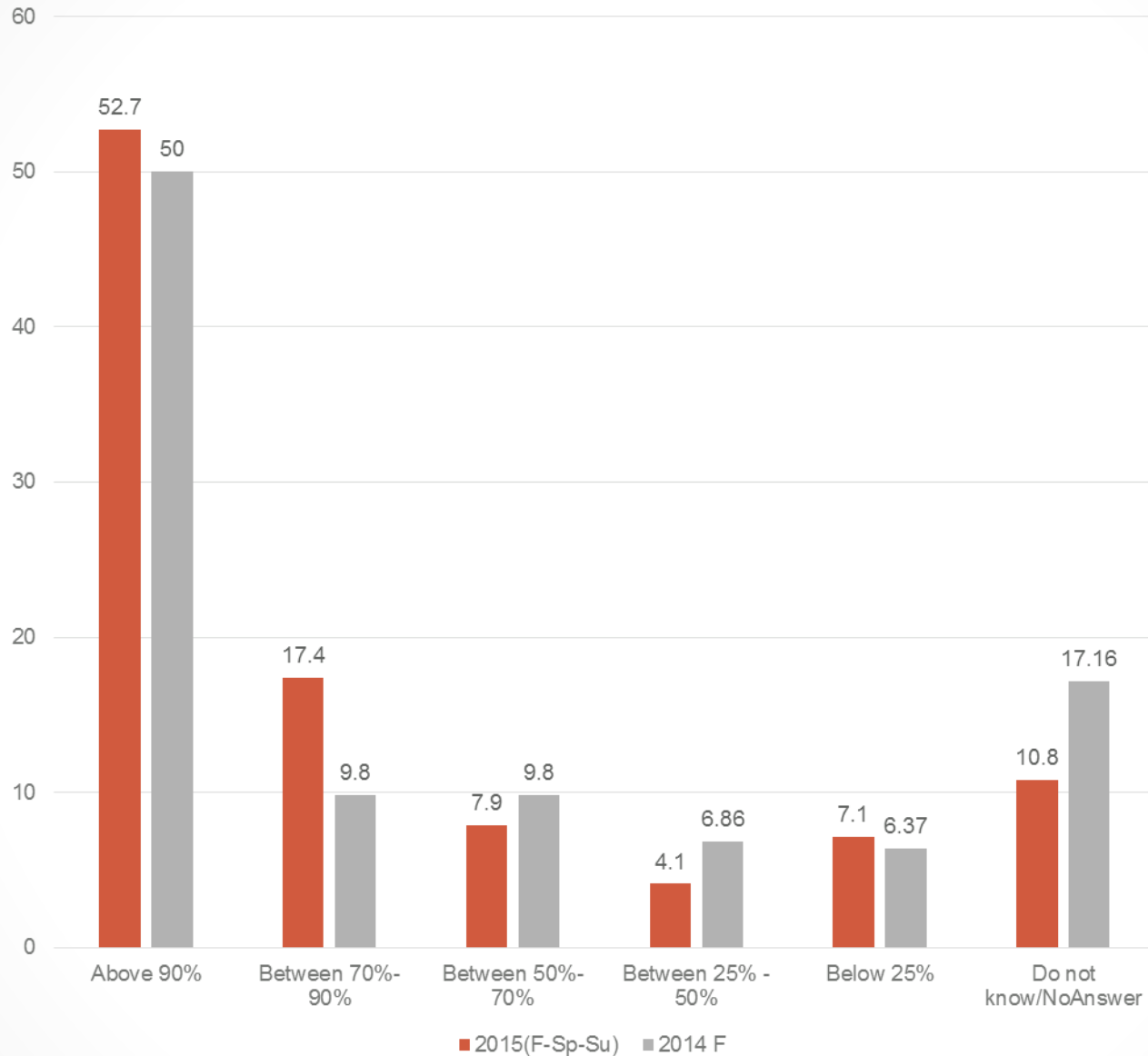
Total

B2. PARTICIPATION AND FUNDING



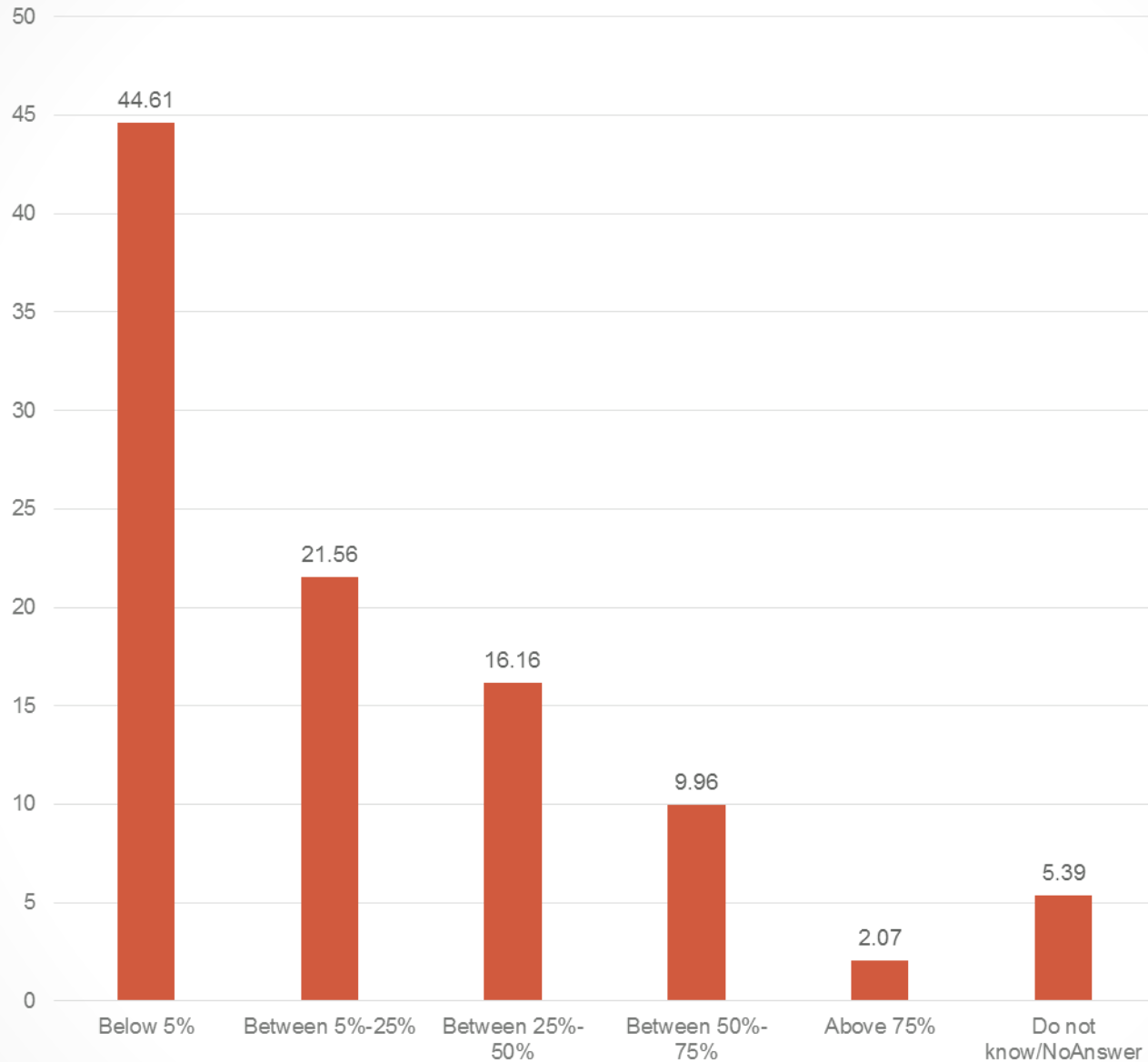
B2.1. Among all the students who applied for outgoing ERASMUS Studies, what proportion has been selected for participation in the programme?

Total



B2.2. Among all the students who applied for outgoing ERASMUS Traineeships, what proportion has been selected for participation in the programme?

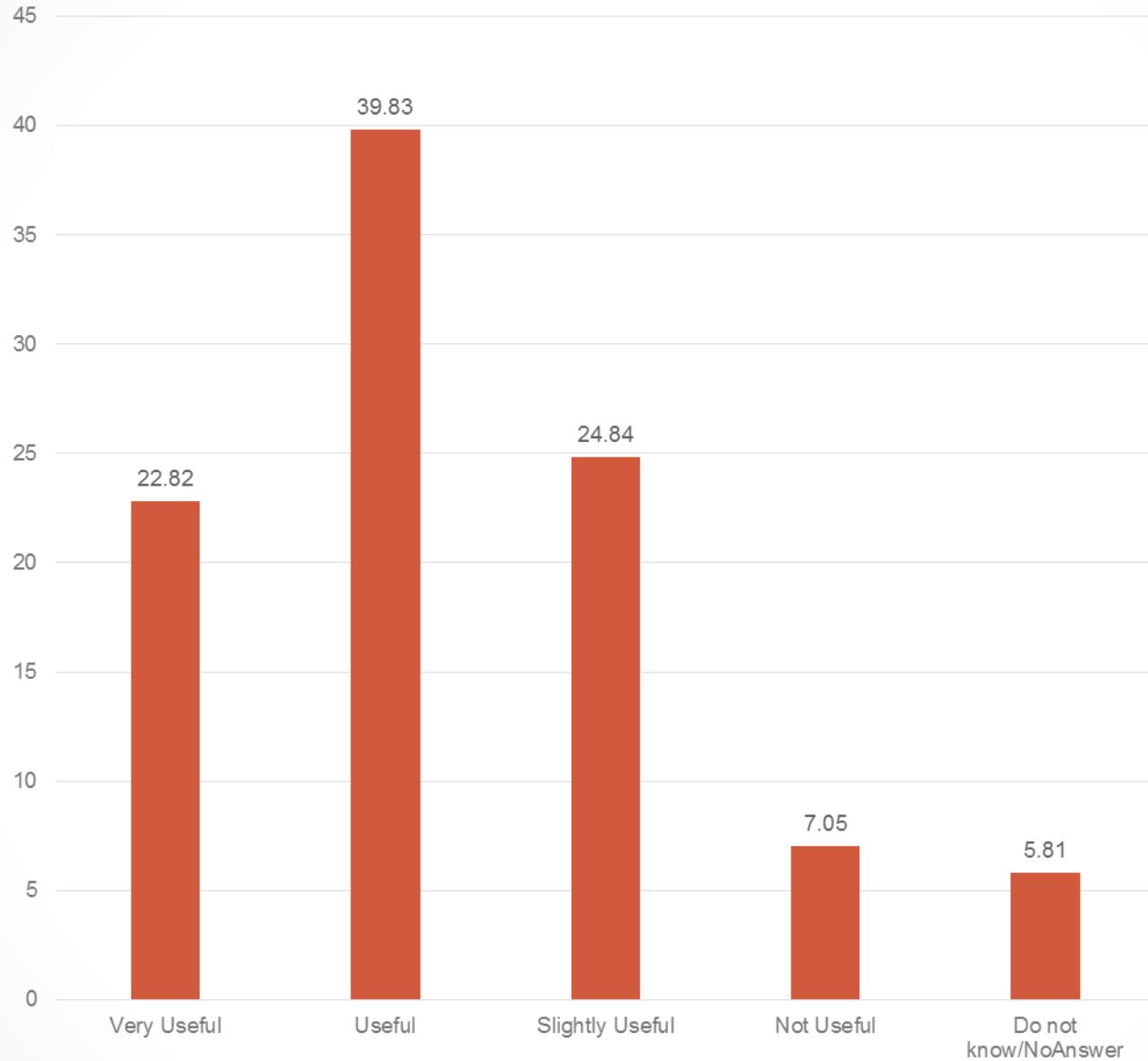
Total



B2.3. Among students selected for participation in ERASMUS+, what proportion withdrew their application after selection?

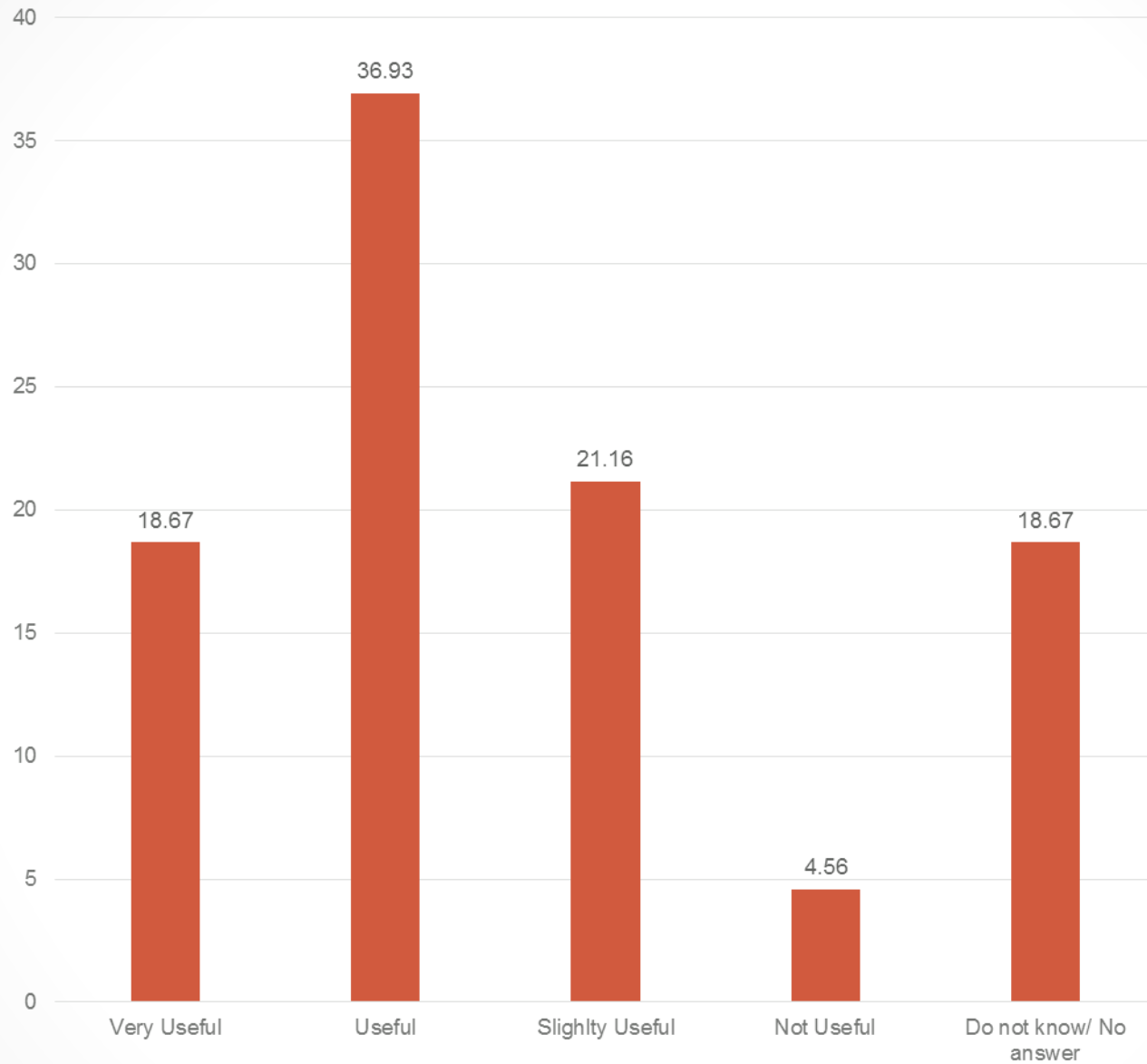
Total

B3. OLS (ONLINE LINGUISTIC SUPPORT)



B3.1. In your opinion, how useful is the OLS Language Assessment?

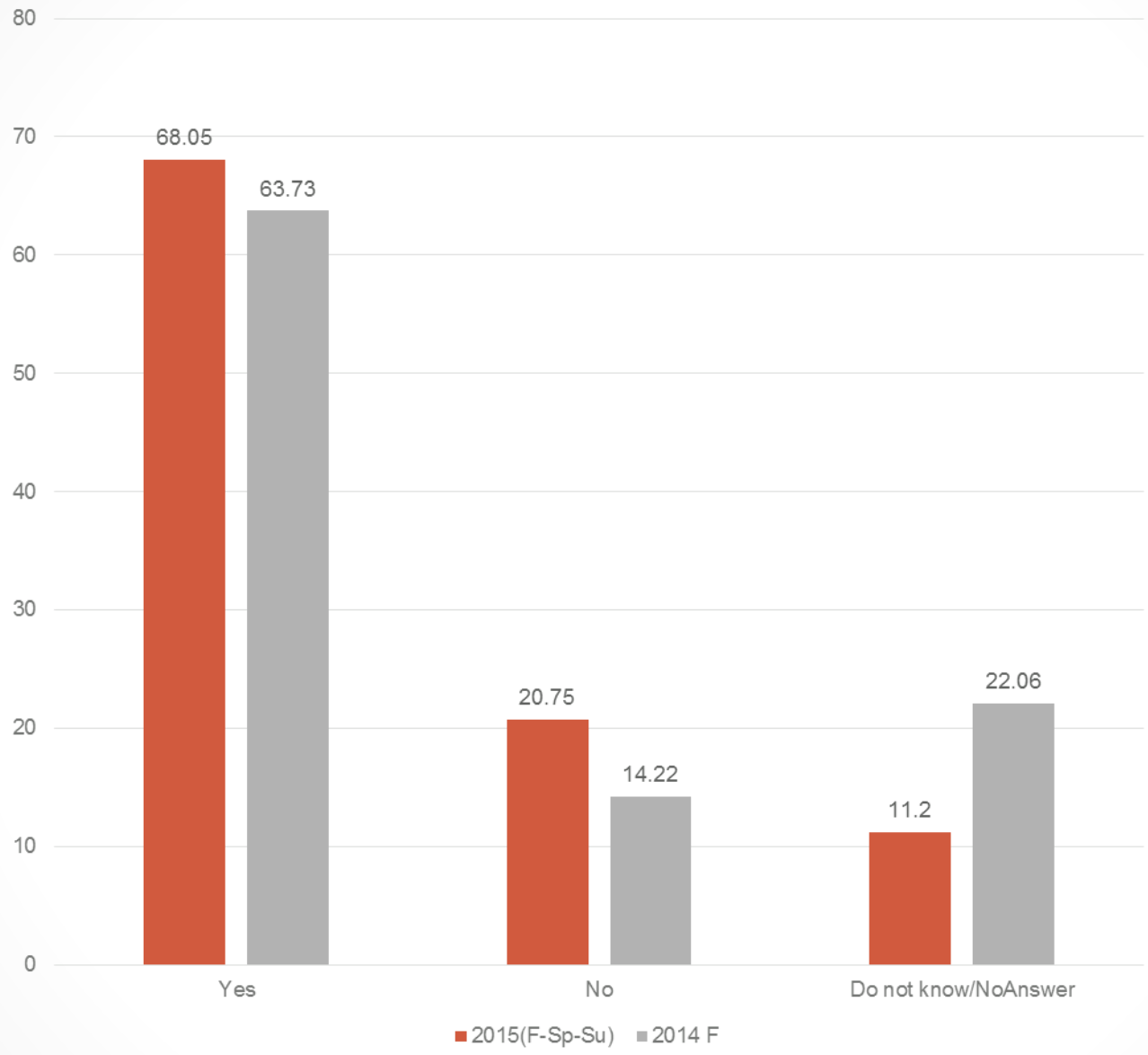
Total



B3.2. In your opinion, how useful are the OLS Language Courses and "live coaching" activities?

Total

B4.LEARNING AGREEMENT

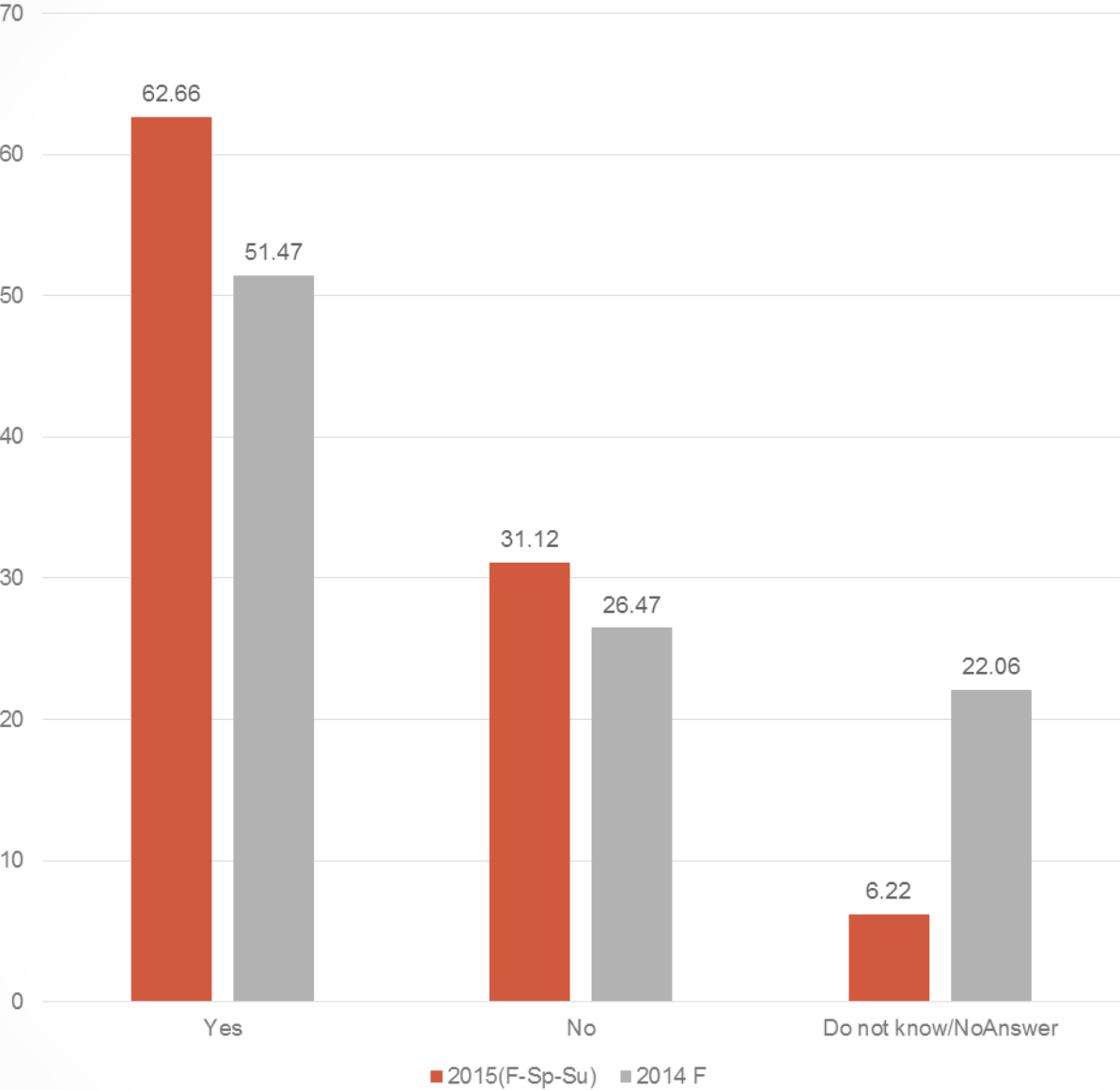


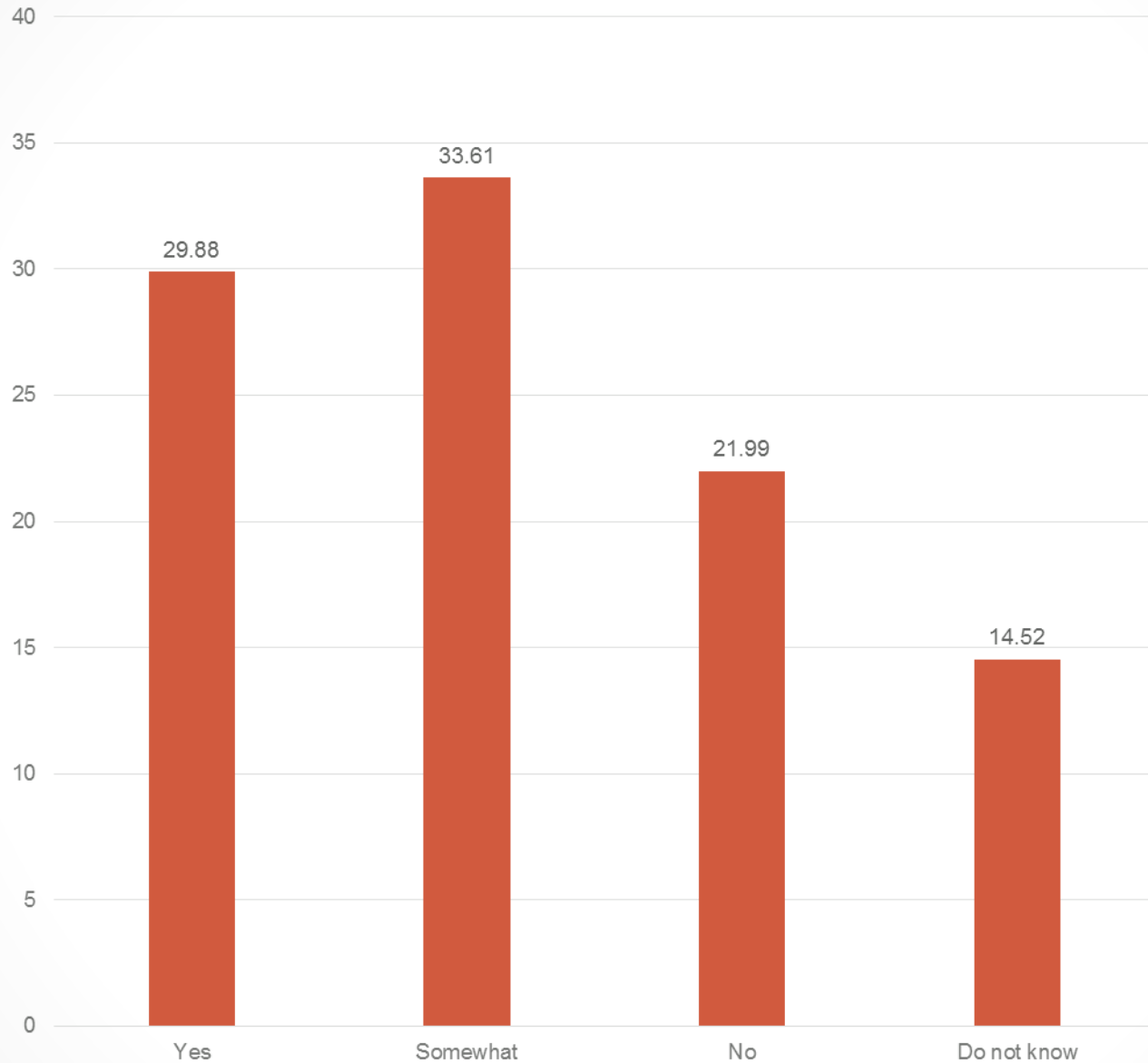
B4.1. Did your institution manage to update its course catalogue before the end of the previous academic year?

Total

B4.2. Has your institution published the specific deadlines for students to introduce changes in the Learning Agreement?

Total





B4.3. Has the new Learning Agreement helped in avoiding problems with recognition of ECTS gained abroad?

Total

	Percent
Some are generated electronically but others are printed documents to be completed	34.9
They are all generated electronically and signed electronically	5
They are all generated electronically but printed to be signed	38.2
We use printed documents to be filled in	22

B5. INSURANCE COVERAGE

	2015 (F-Sp-Su)(%)	2014 F(%)
Receiving HEI	1.2	6.86
Sending HEI	19.9	19.12
Student	78.8	67.65

B5.1. Indicate who is taking care of the following types of insurance coverage: in mobility of studies [a.Health]

Total

	2015 (F-Sp-Su)(%)	2014 F(%)
Receiving HEI	5.8	3.43
Sending HEI	28.2	16.18
Student	66.0	45.59

B5.1. Indicate who is taking care of the following types of insurance coverage: in mobility of studies [b. Liability]

Total

	2015 (F-Sp-Su)(%)	2014 F(%)
Receiving HEI	4.1	5.39
Sending HEI	27.8	17.16
Student	68.0	50.98

B5.1. Indicate who is taking care of the following types of insurance coverage: in mobility of studies [c. Accident]

Total

	2015 (F-Sp-Su)(%)	2014 F(%)
Receiving Organization/Enterprise	.8	6.86
Sending HEI	19.9	25
Student	79.3	71.08

B5.2. Indicate who is taking care of the following types of insurance coverage: in mobility for traineeships[a. Health]

Total

	2015 (F-Sp-Su)(%)	2014 F(%)
Receiving Organization/Enterprise	8.7	8.82
Sending HEI	29.0	29.90
Student	62.2	47.55

B5.2. Indicate who is taking care of the following types of insurance coverage: in mobility for traineeships[b. Liability]

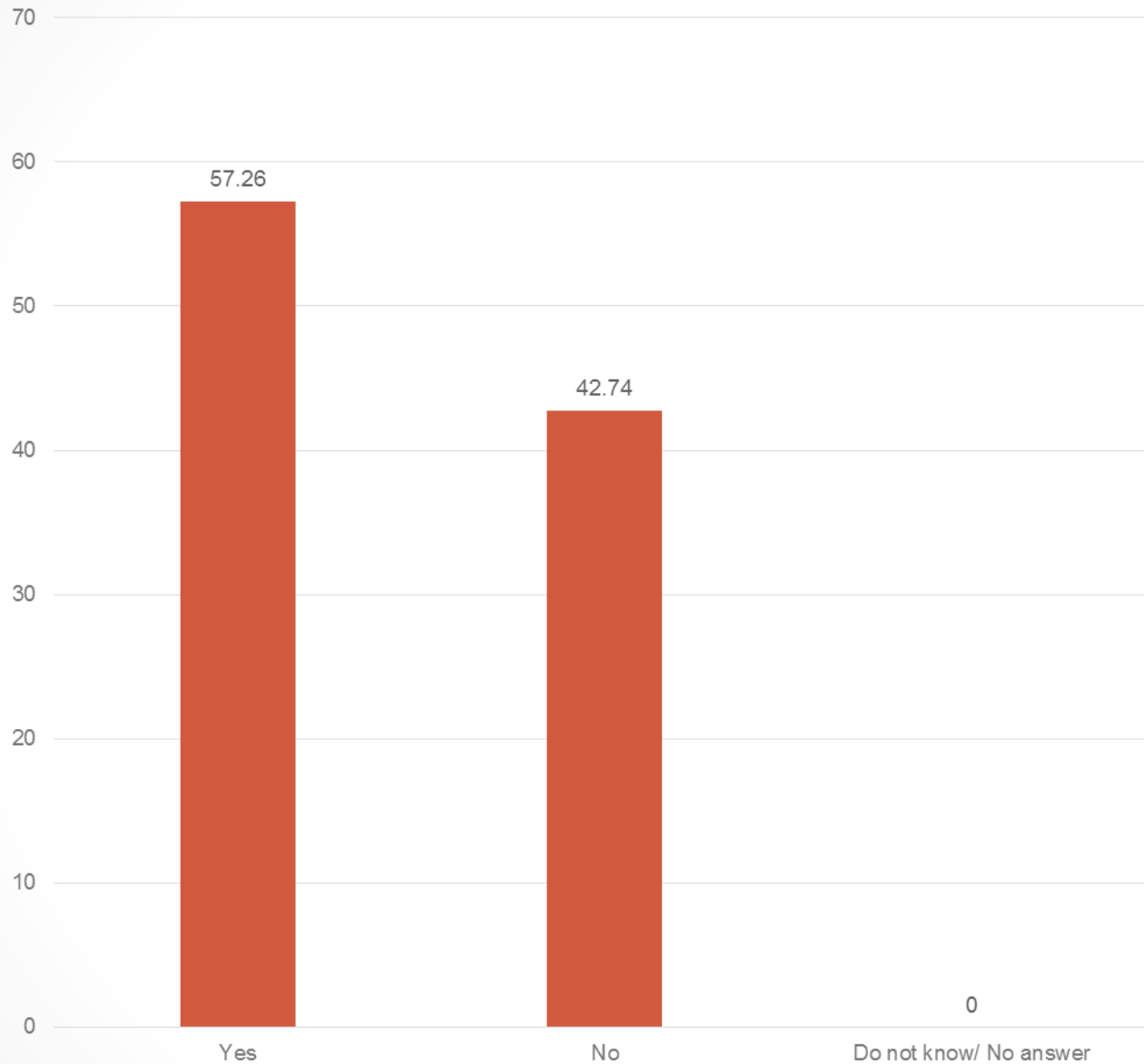
Total

	2015 (F-Sp-Su)(%)	2014 F(%)
Receiving Organization/Enterprise	7.1	11.27
Sending HEI	28.6	30.88
Student	64.3	52.94

B5.2. Indicate who is taking care of the following types of insurance coverage: in mobility for traineeships[c. Accident]

Total

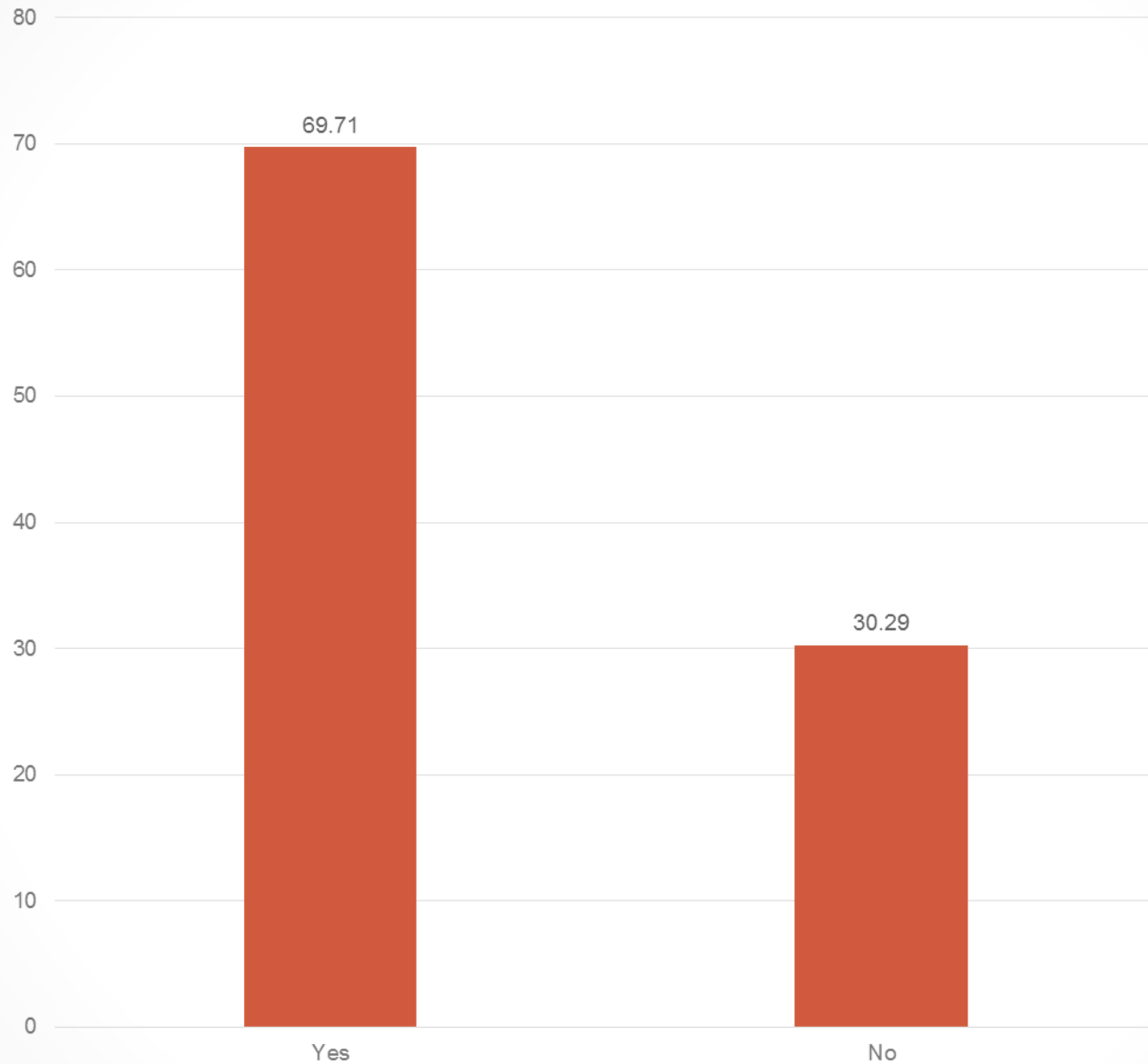
B6. EUROPASS MOBILITY



B6.1. Do you encourage your participants to use the Europass Mobility Certificate?

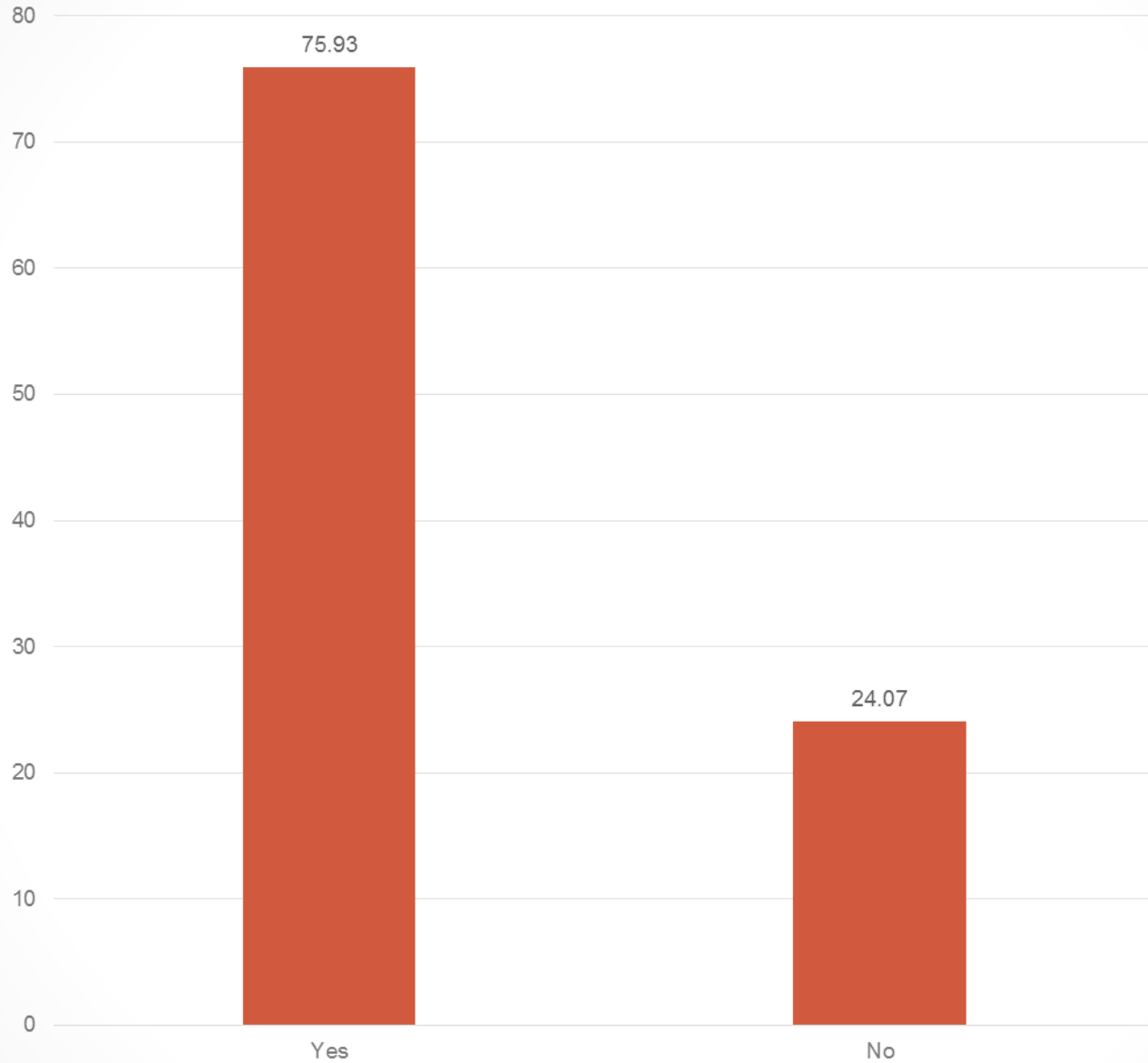
Total

B7. RECOGNITION



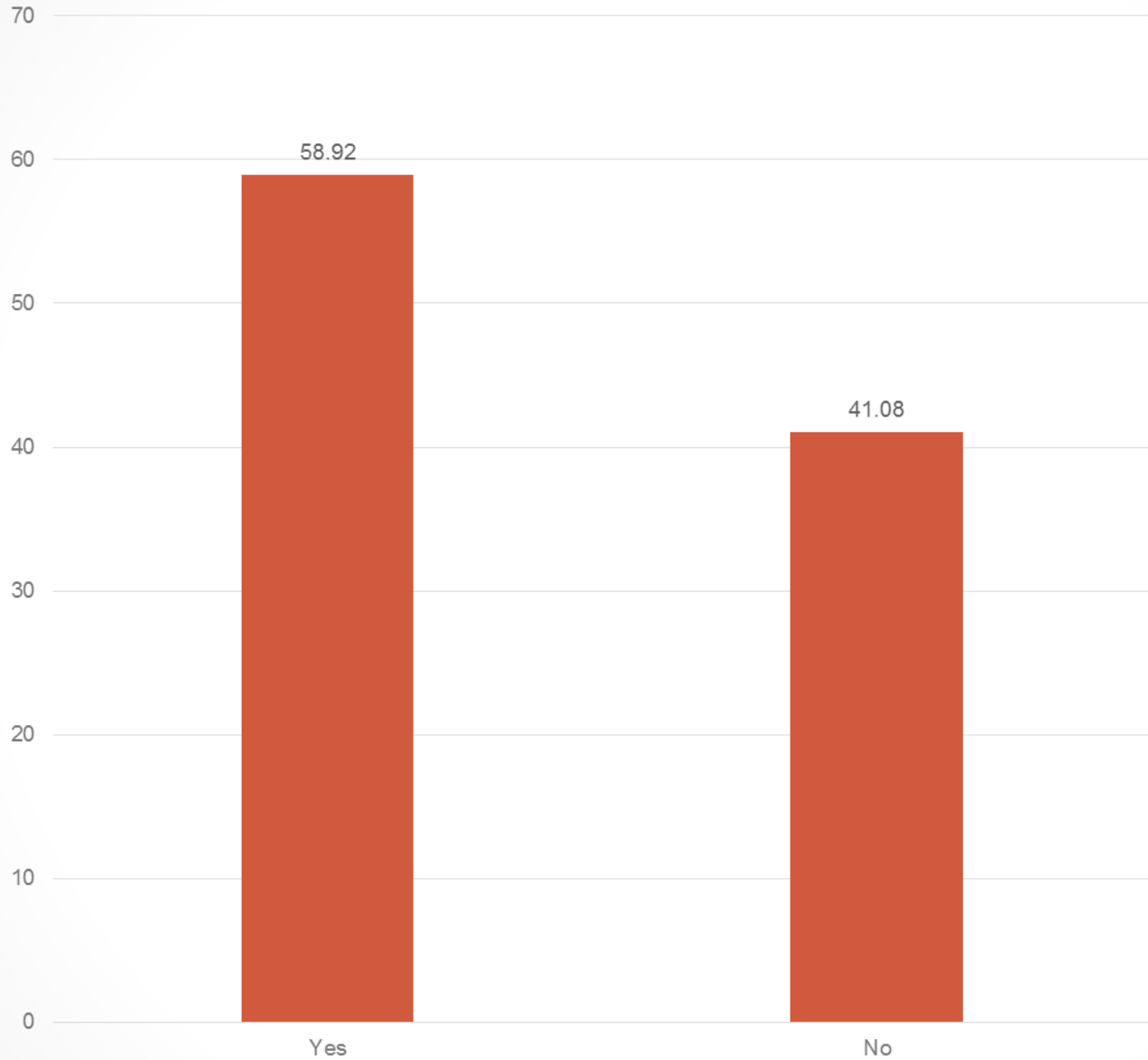
B7.1. Does your institution use ECTS Grade Distribution Tables?

Total



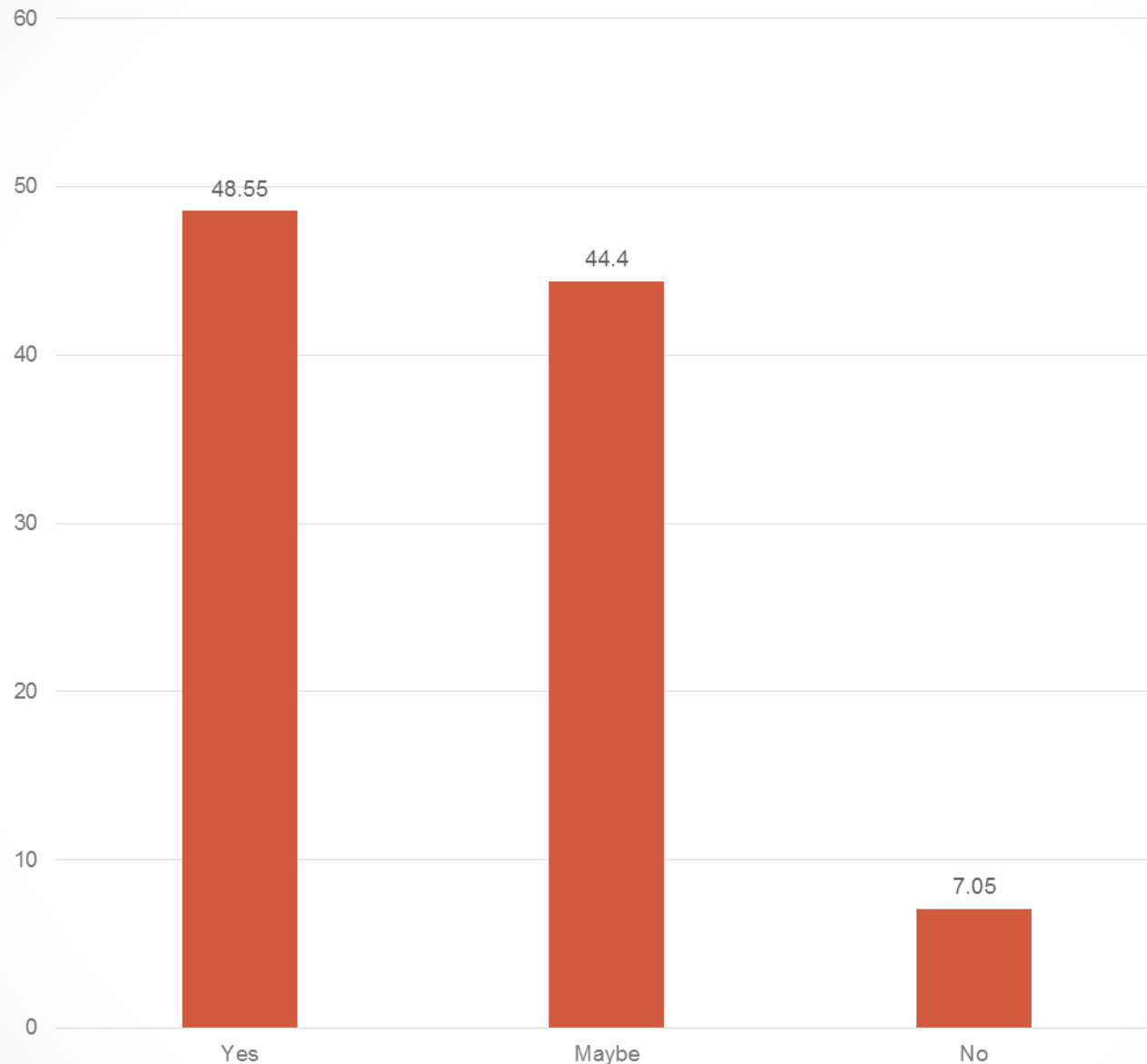
B7.2. Does your institution convert the grades obtained abroad by mobile students to home grade distribution table results?

Total



B7.3. Is there room for personal interpretation and/or adjustment of grades in the process of grade conversion?

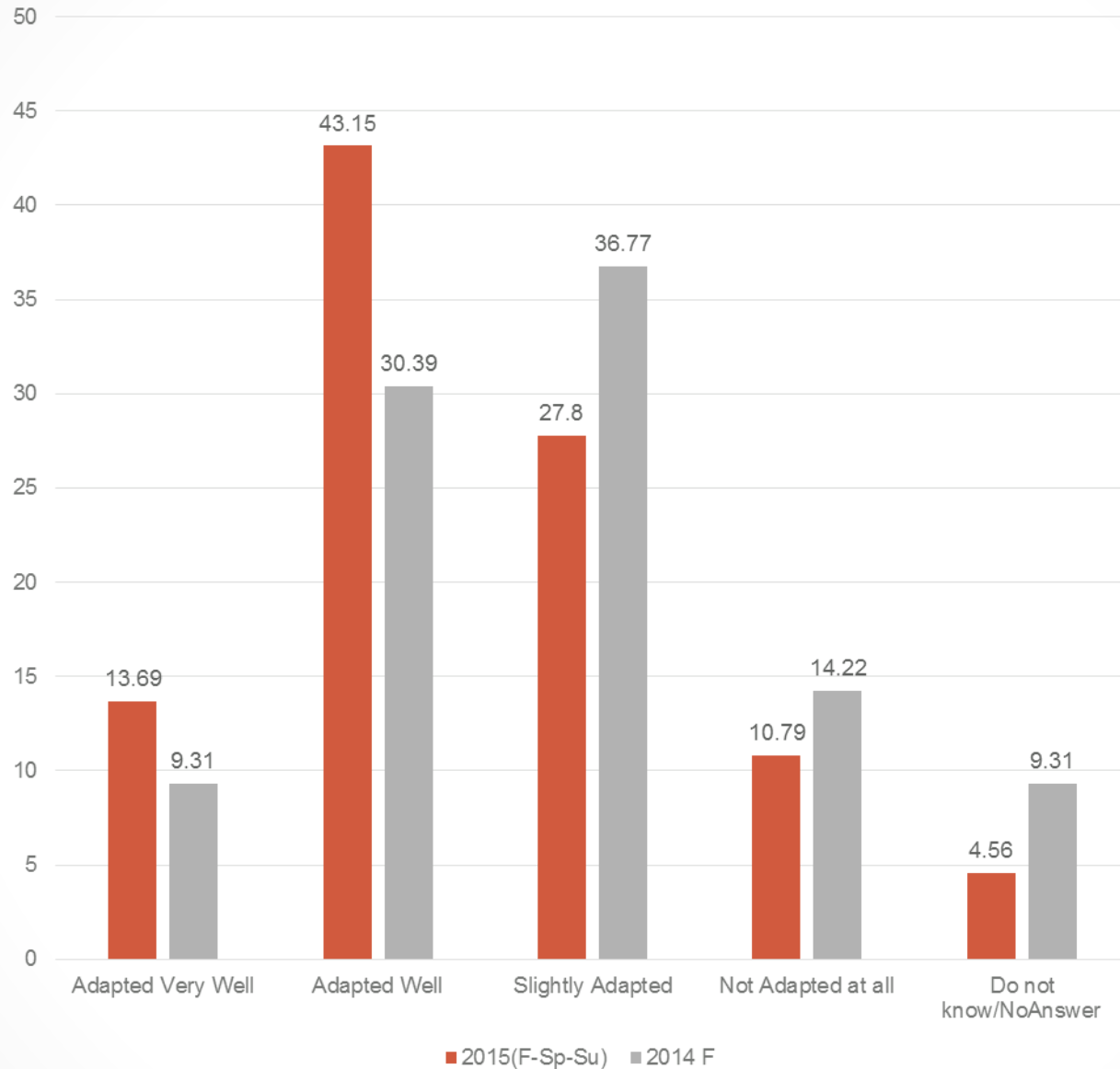
Total



B7.4. Does your institution intend to produce ECTS Grade Distribution Tables in the near future as advocated by the 2015 ECTS users' guide?

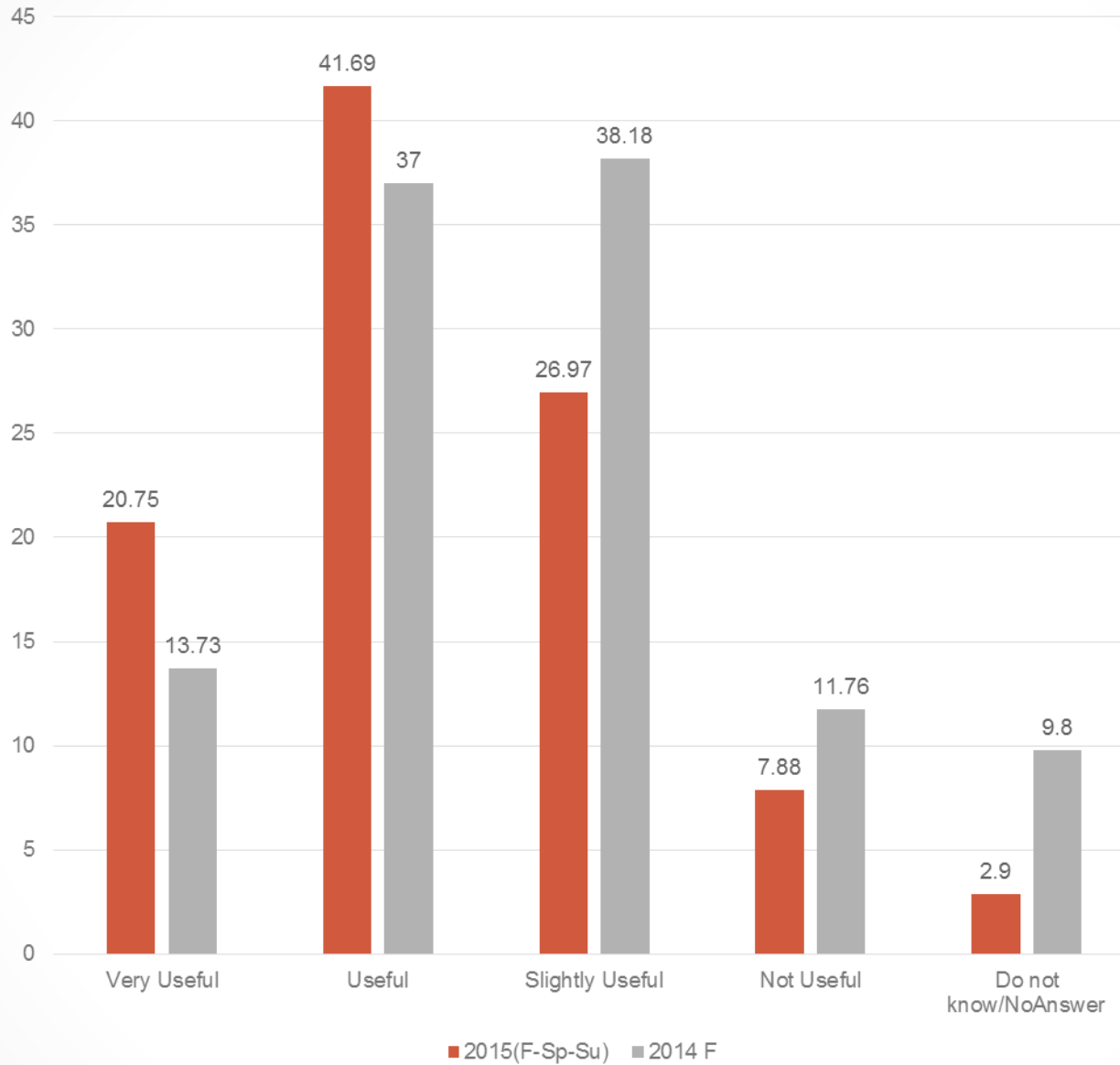
Total

B8. MOBILITY TOOL+



B8.1. To which extent is the Mobility Tool+ adapted to your needs in terms of monitoring your mobilities?

Total

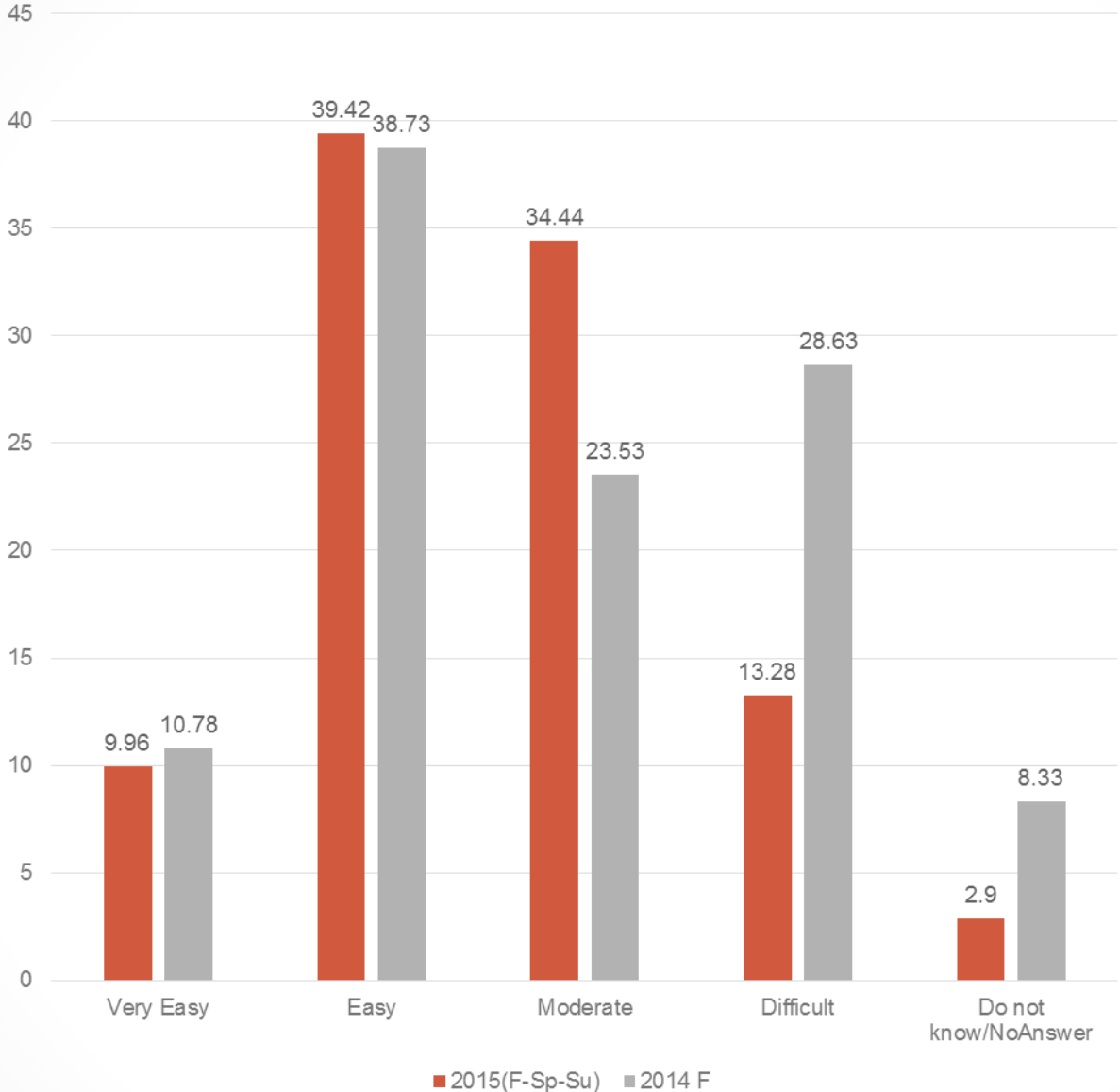


B8.2. Do you find the Mobility Tool+ useful?

Total

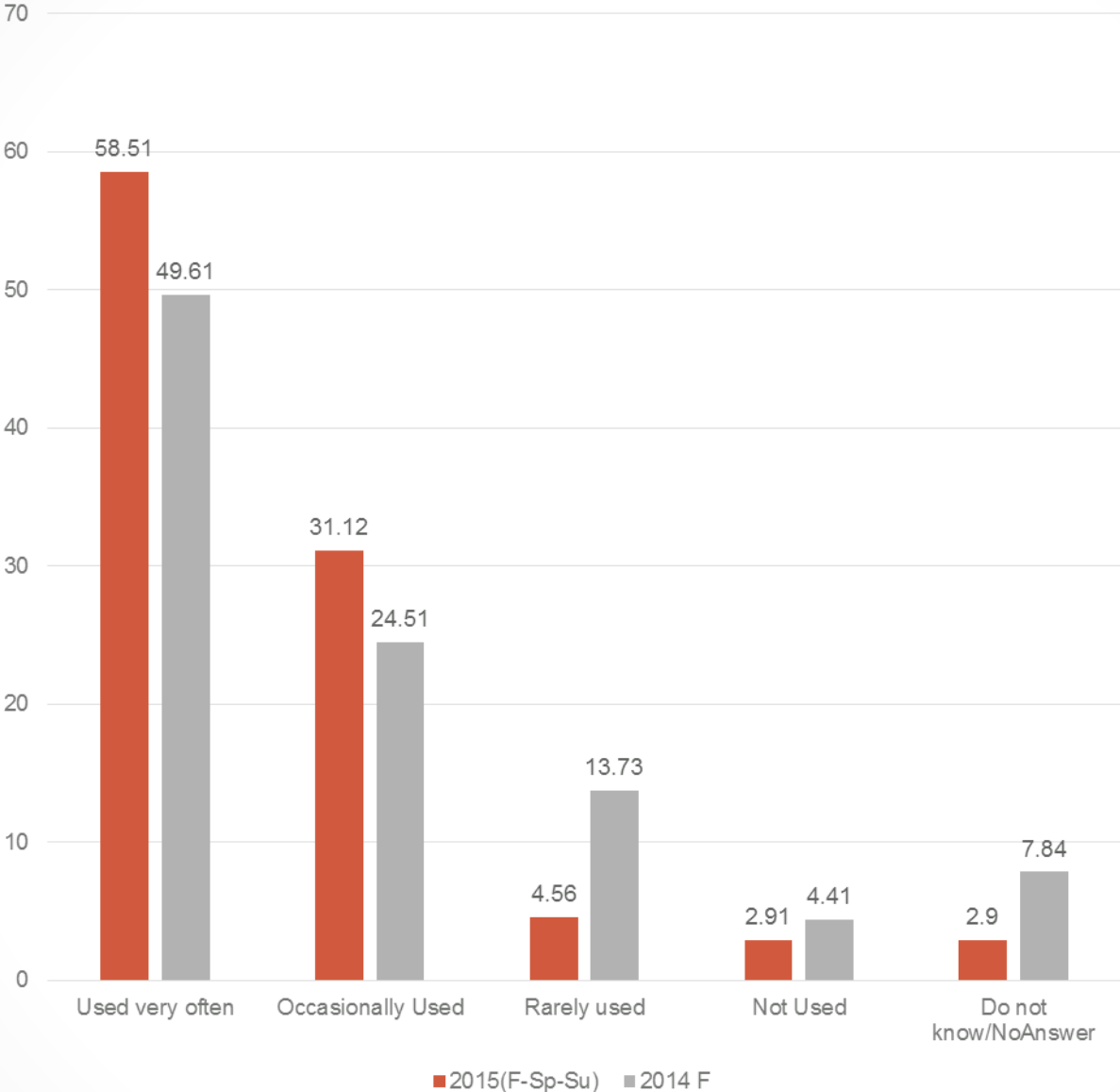
B8.3. Do you find the Mobility Tool+ easy to use?

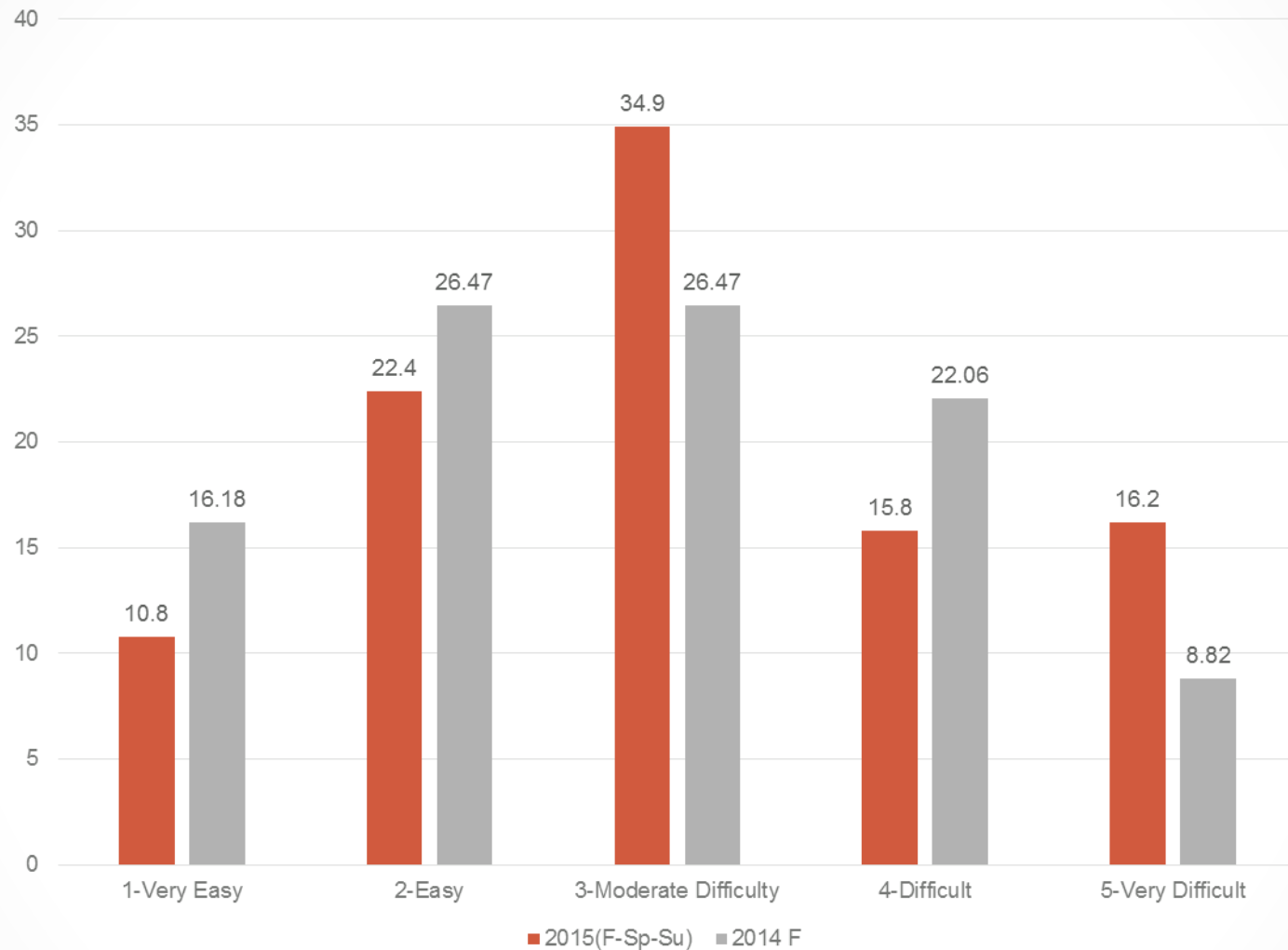
Total



B8.4. Is the Mobility Tool+ used at your institution on a regular basis?

Total

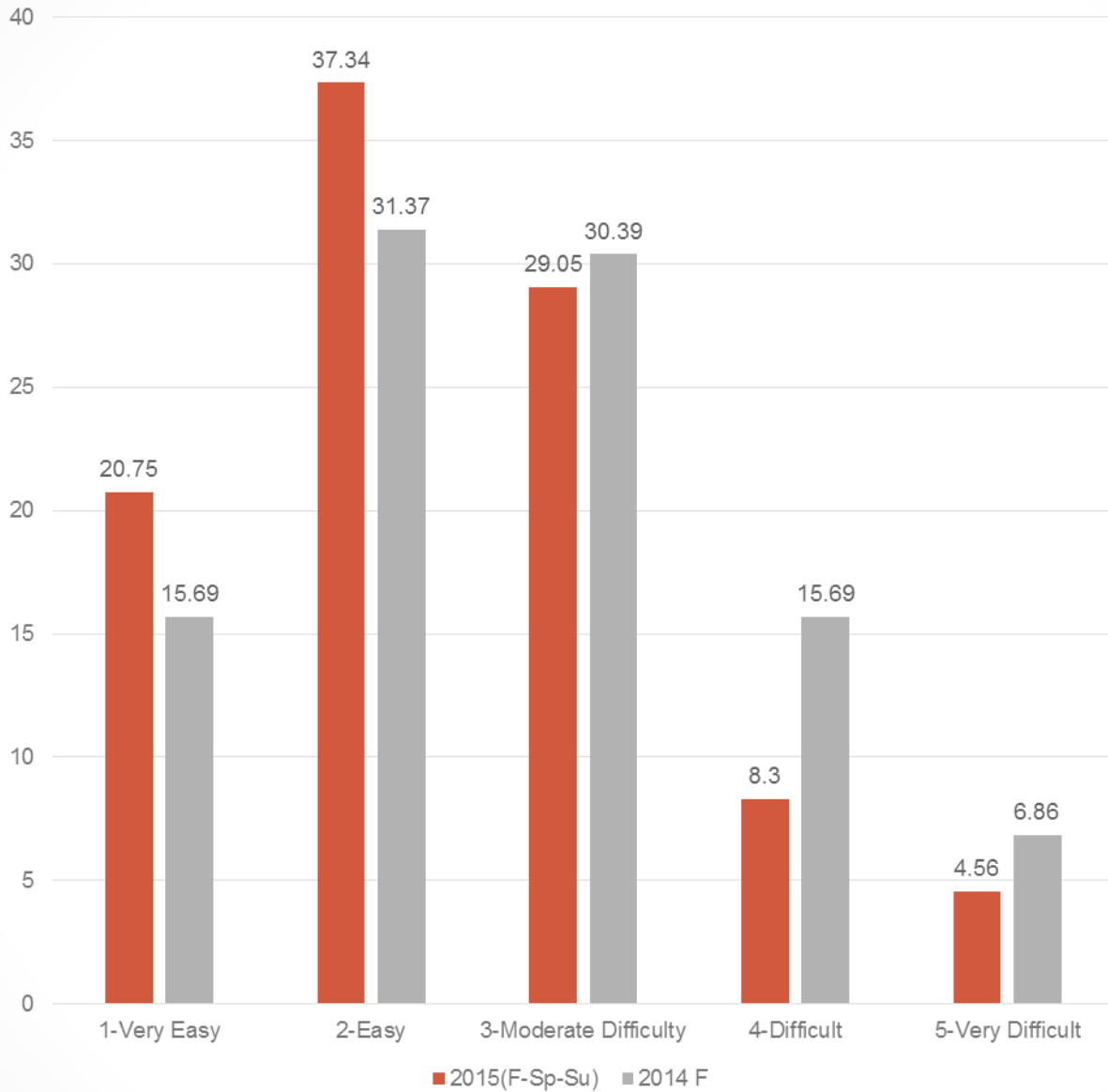




B8.5. Among the following features of the Mobility Tool+, rate their level of difficulty.[a. Import]

Total

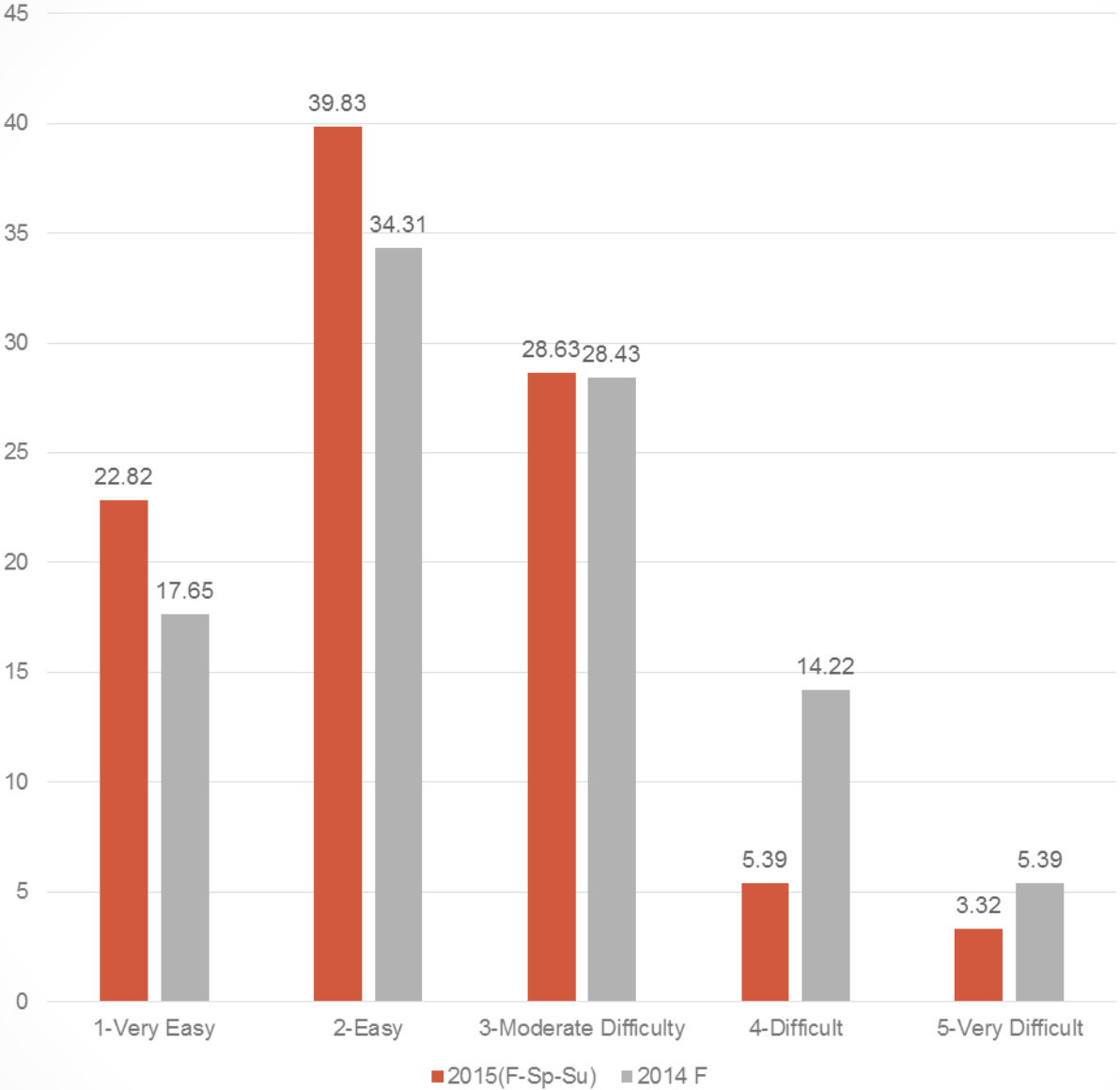
B8.5. Among the following features of the Mobility Tool+, rate their level of difficulty.[b. Export]



Total

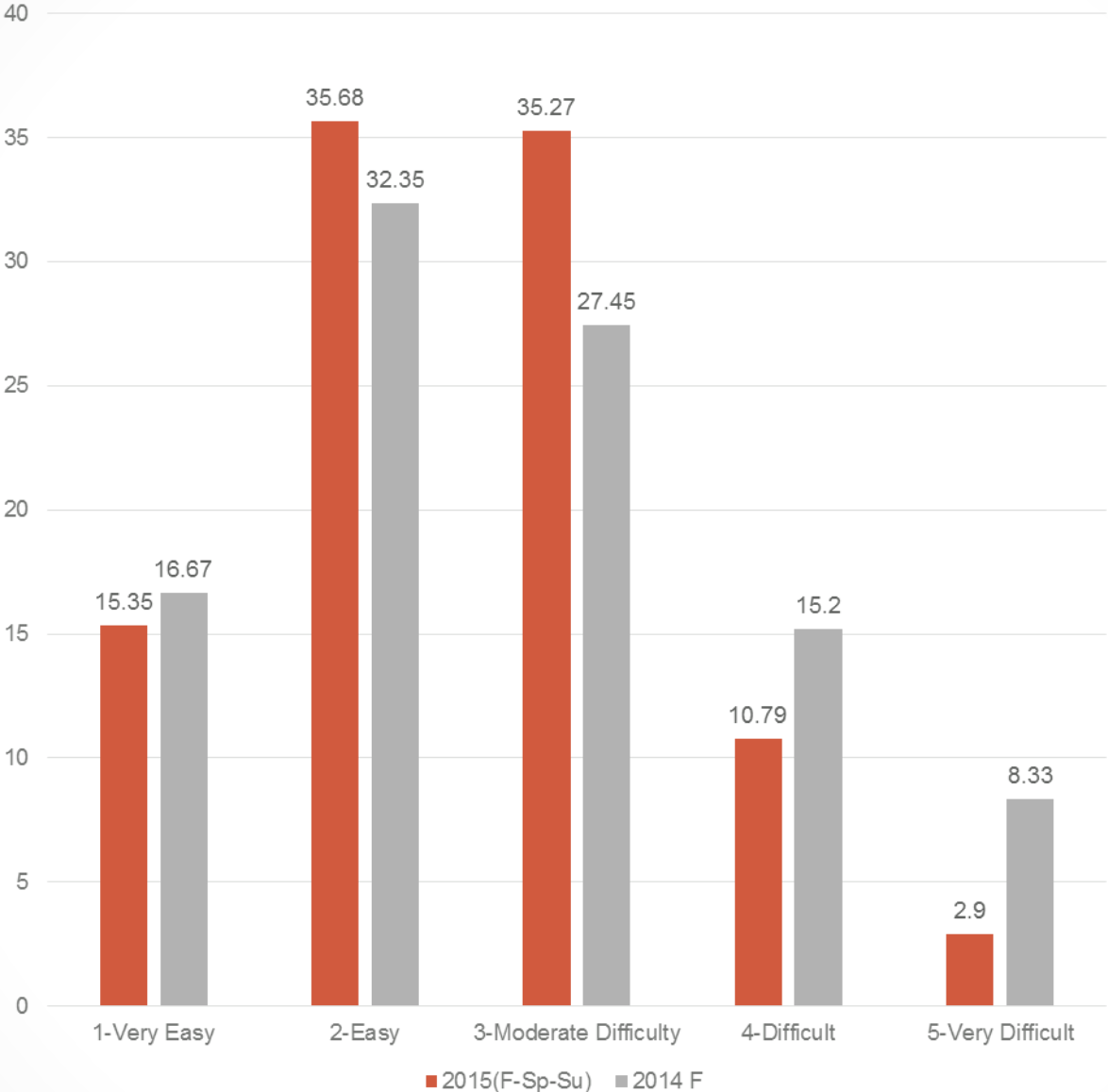
B8.5. Among the following features of the Mobility Tool+, rate their level of difficulty.[c. Mobilities Registration]

Total

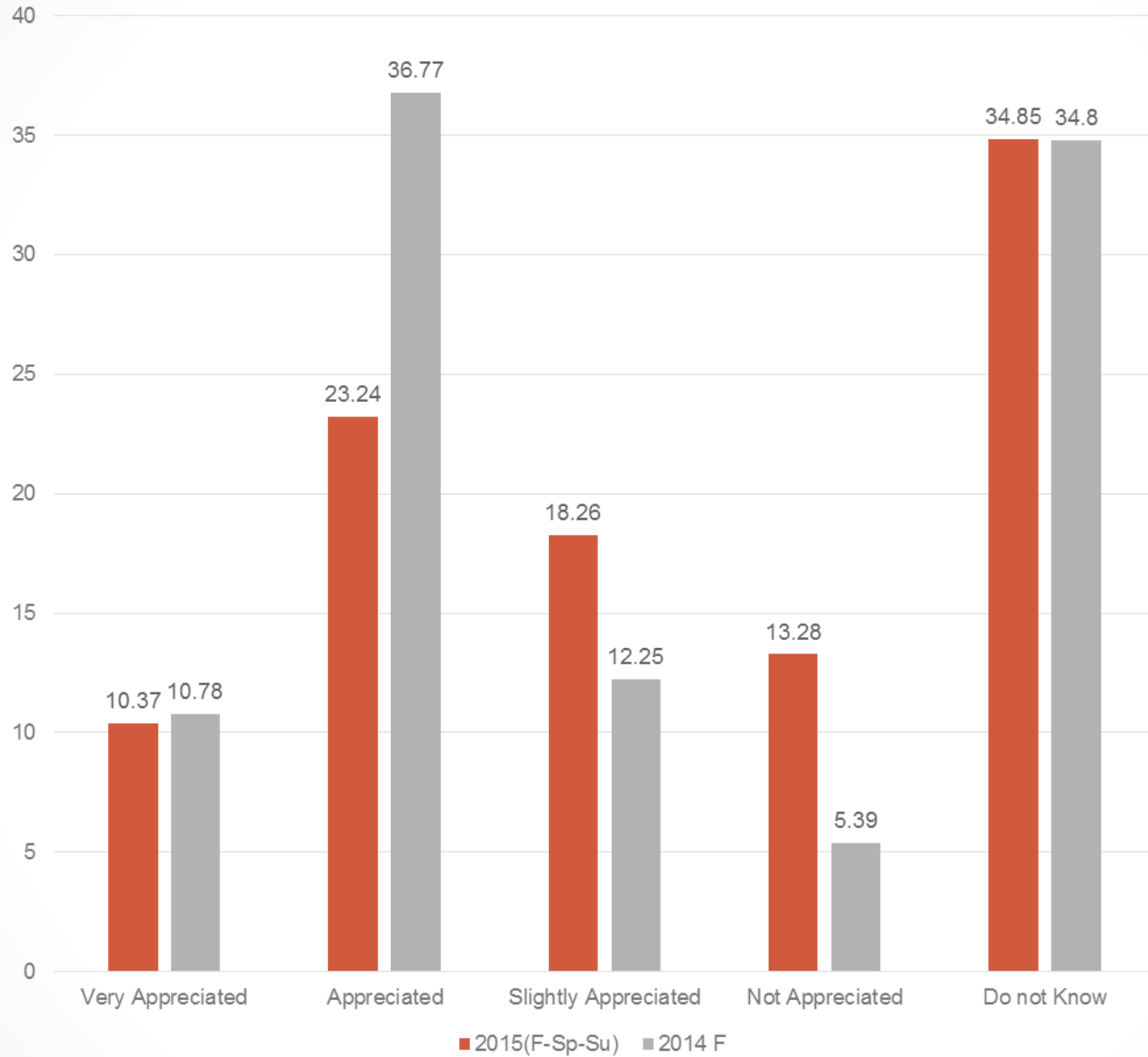


B8.5. Among the following features of the Mobility Tool+, rate their level of difficulty.[d. Partners Registration]

Total



B9. OTHER



B9.1. Is the new possibility to combine staff teaching and training mobility appreciated among your staff?

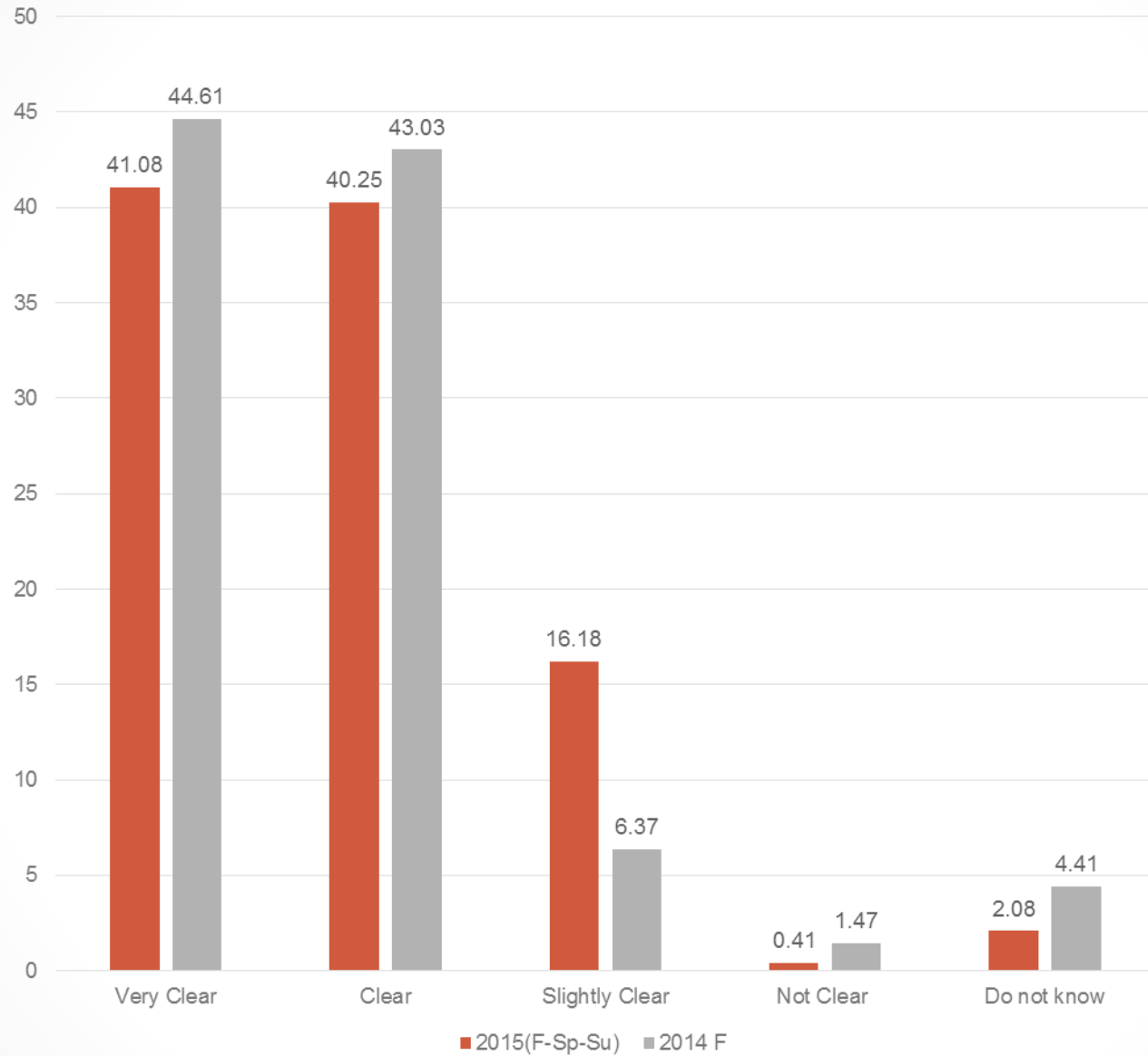
Total

B9.2. How many applications did you receive for combining staff teaching and training mobility-

Mean	6.17	
Range	128	
Minimum	0	
Maximum	128	
Percentiles	25	.00
	50	.00
	75	3.00

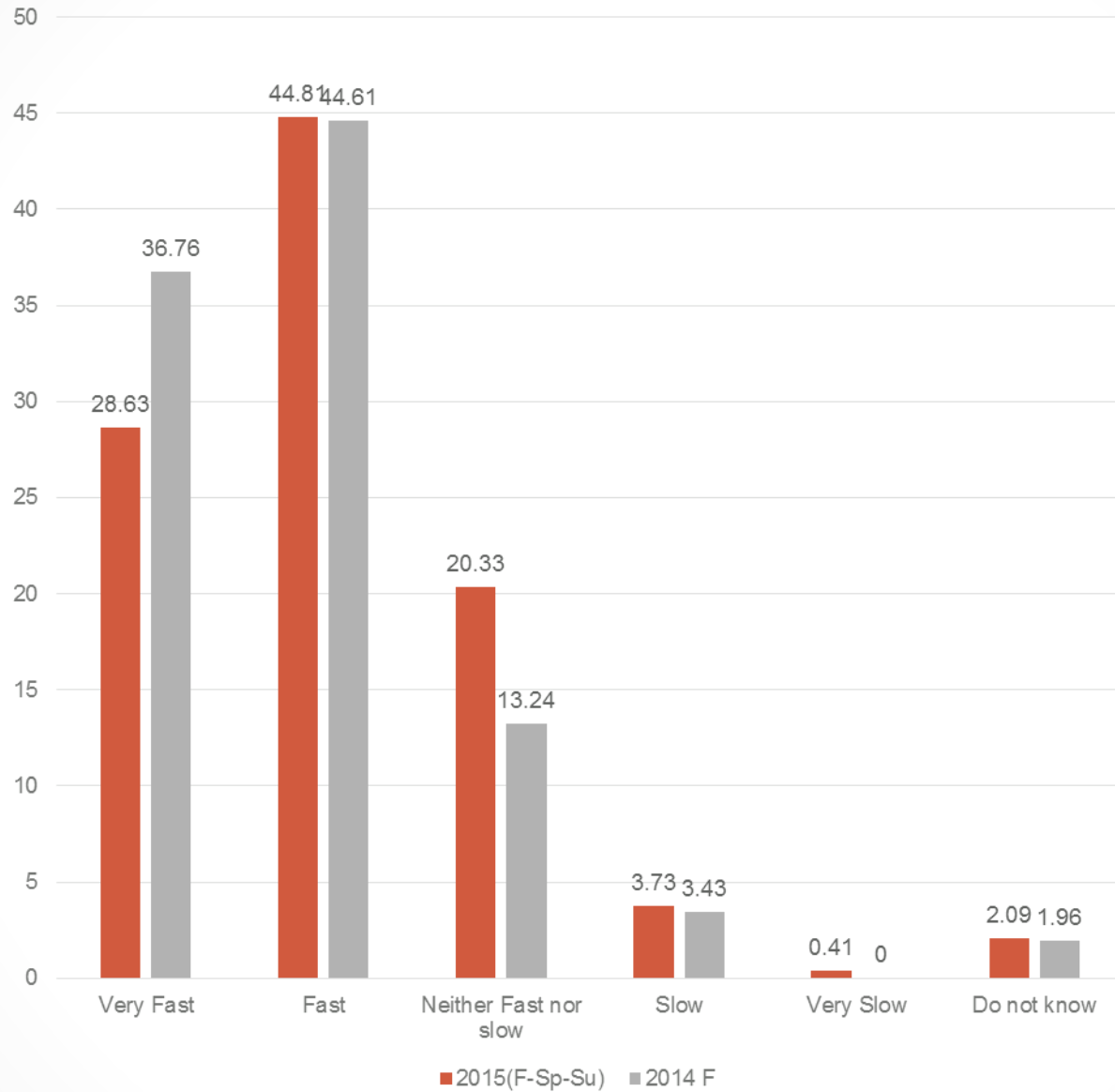
B9.2. How many applications did you receive for combining staff teaching and training mobility?

Total



B9.3. Do you get clear responses from your National Agency?

Total



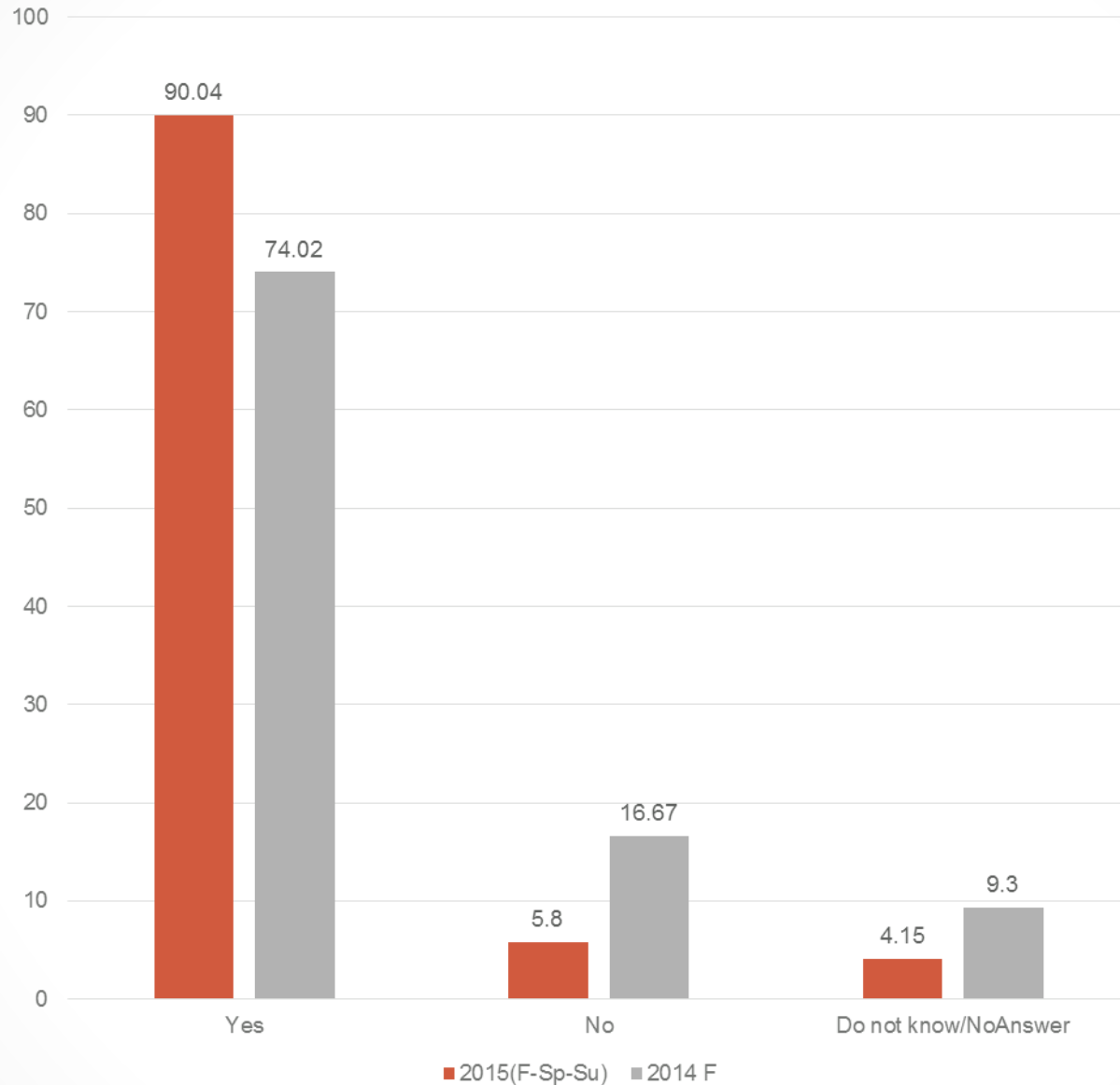
B9.4. Do you get fast responses from your National Agency?

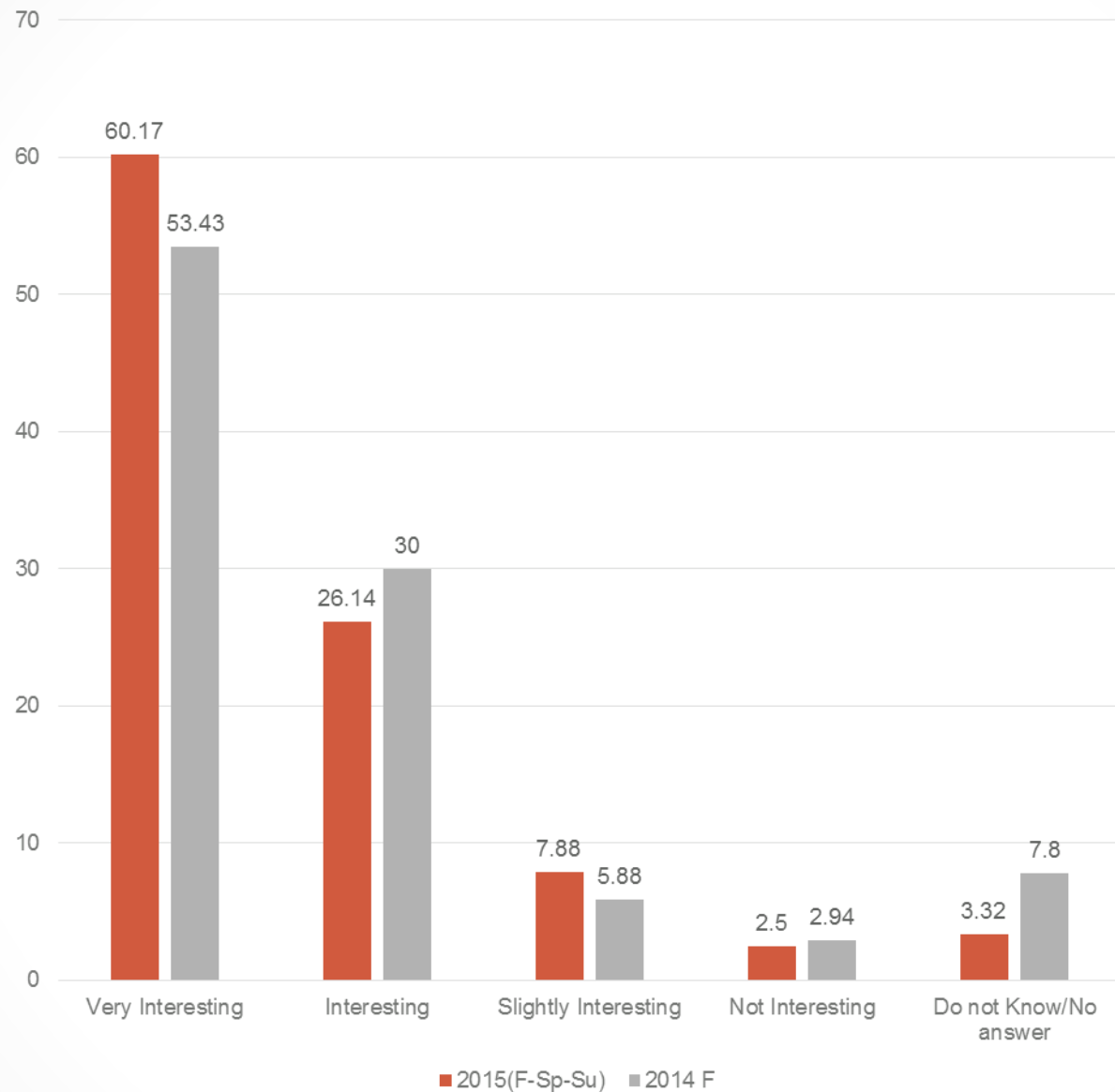
Total

C1. MOBILITY BETWEEN PROGRAMME AND PARTNER COUNTRIES (KA107) - INTEREST DEMAND

C1.1. Are you familiar with the international opening (to Partner Countries outside Europe) of ERASMUS under ERASMUS+?

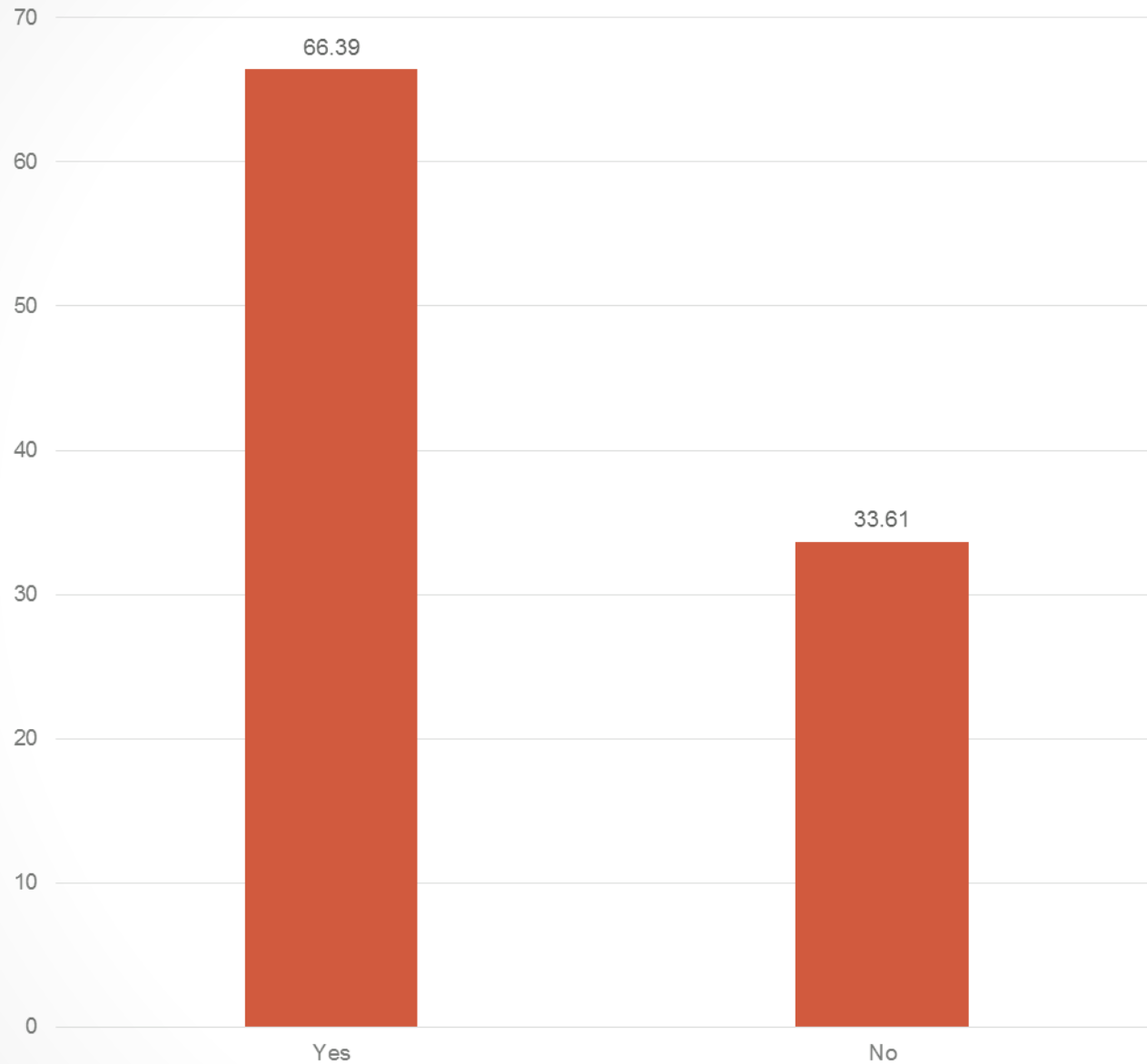
Total





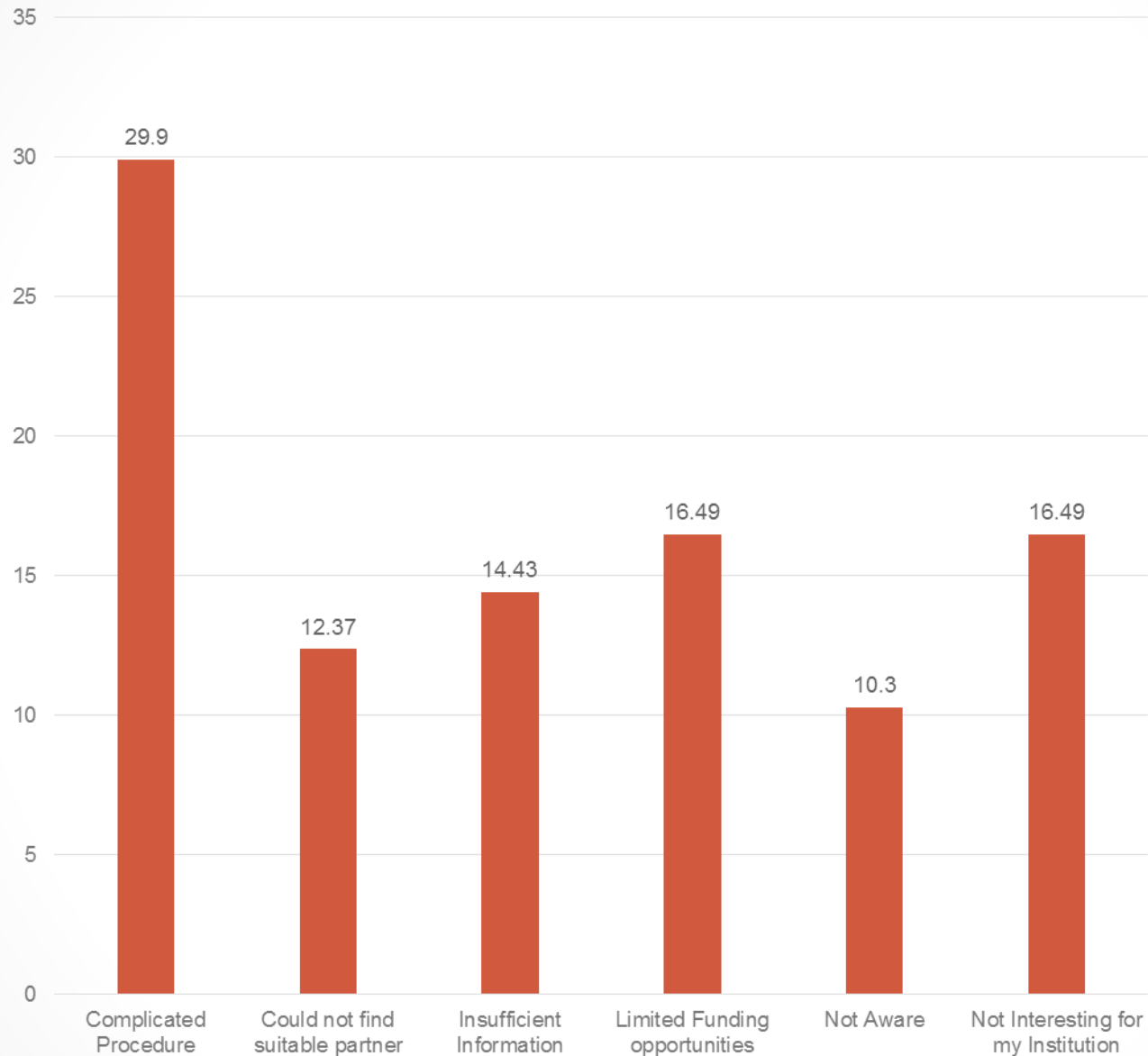
C1.2. Do you see the international opening of ERASMUS+ as an interesting opportunity for your HEI?

Total



C1.3. Did you apply under the 2015 Call for International Credit Mobility?

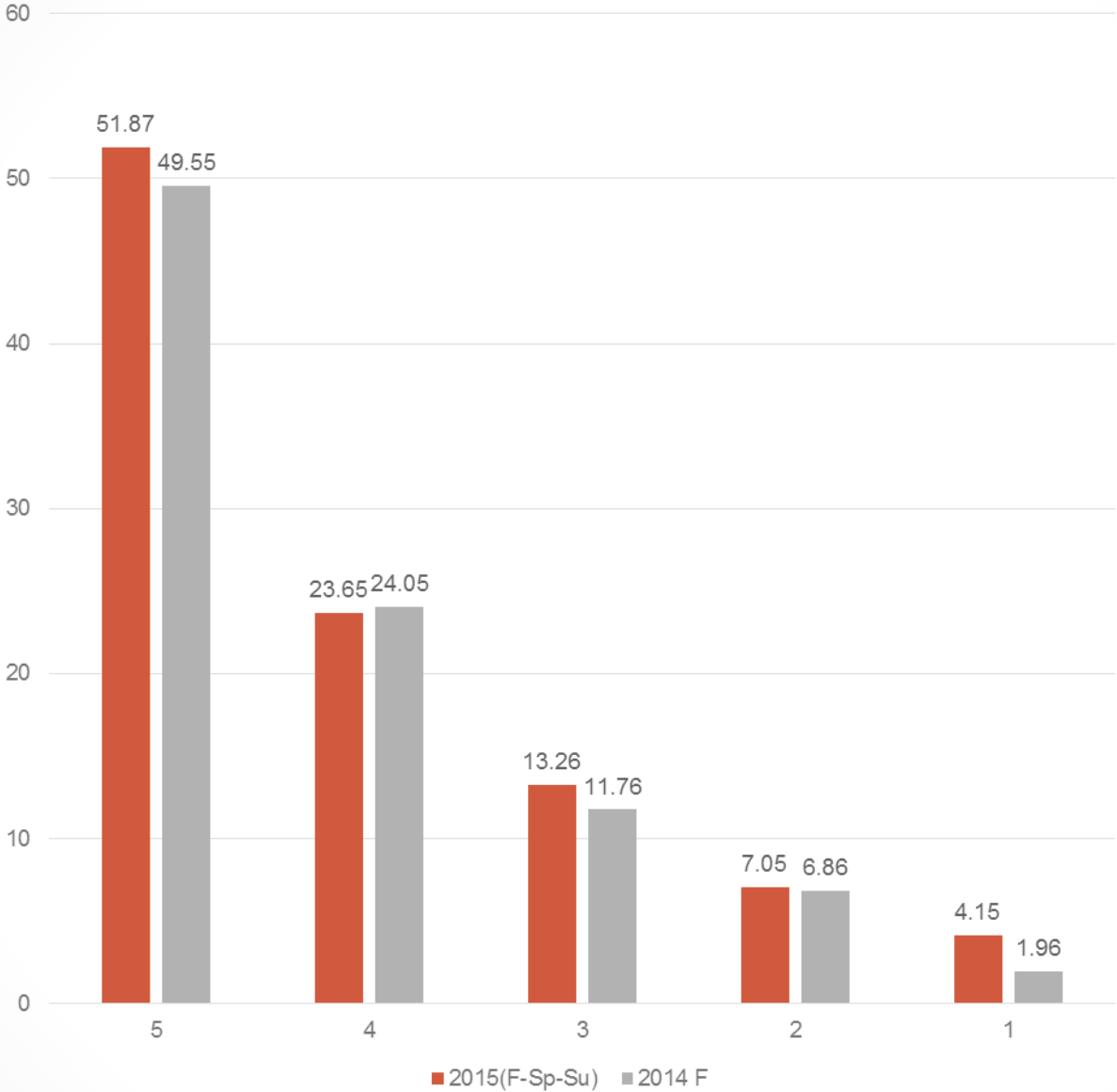
Total



C1.4. In case you didn't apply under the 2015 Call, please specify why (you may mark more than one):

Total

C1.5. How interesting are the following elements of international credit mobility to your institution? [a. Student Mobility – Incoming Students]



Total

Scale : 1-Not Interesting at all

 5-Very Interesting

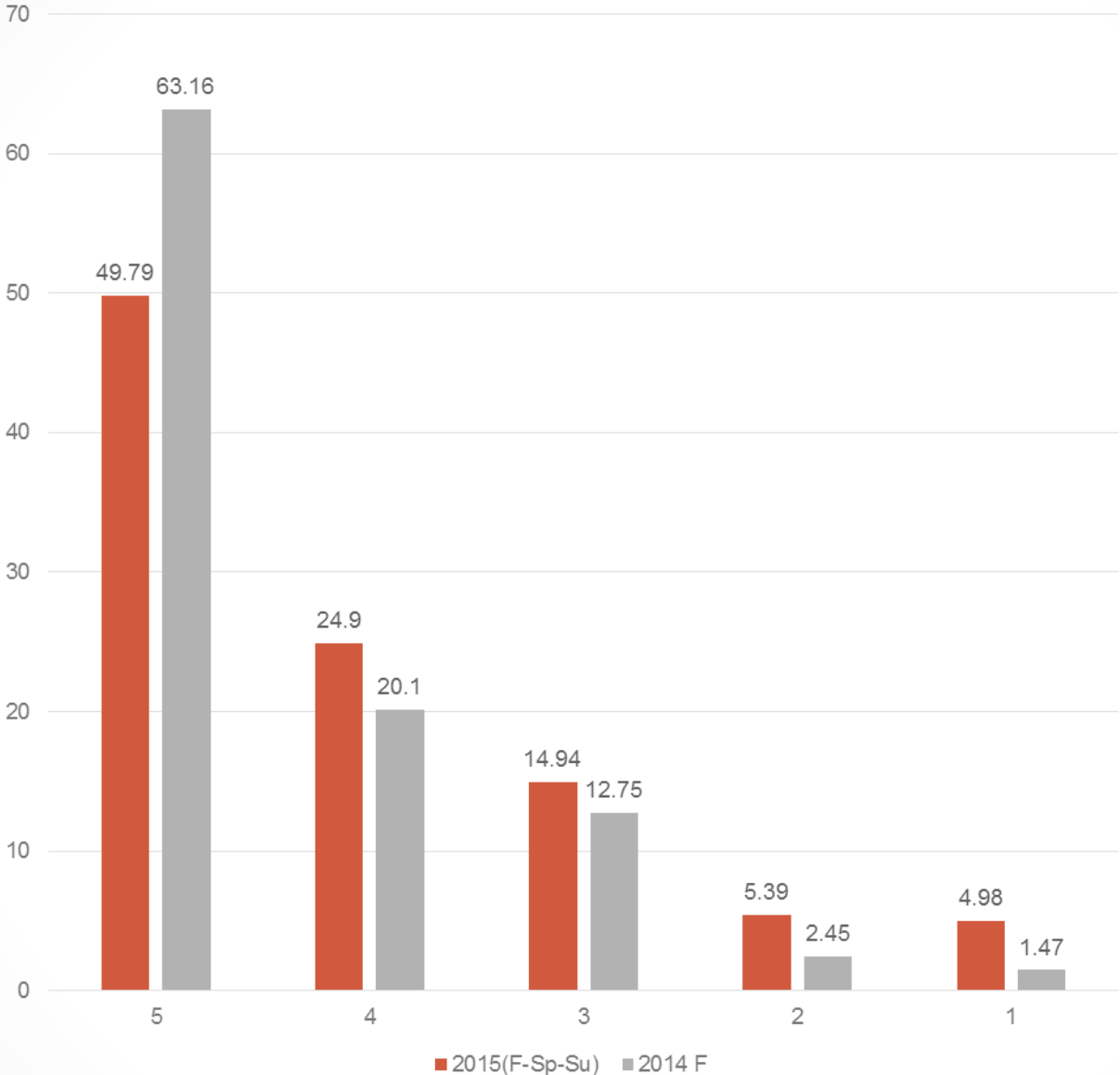
C1.5. How interesting are the following elements of international credit mobility to your institution? [a. Student Mobility – Outgoing Students]

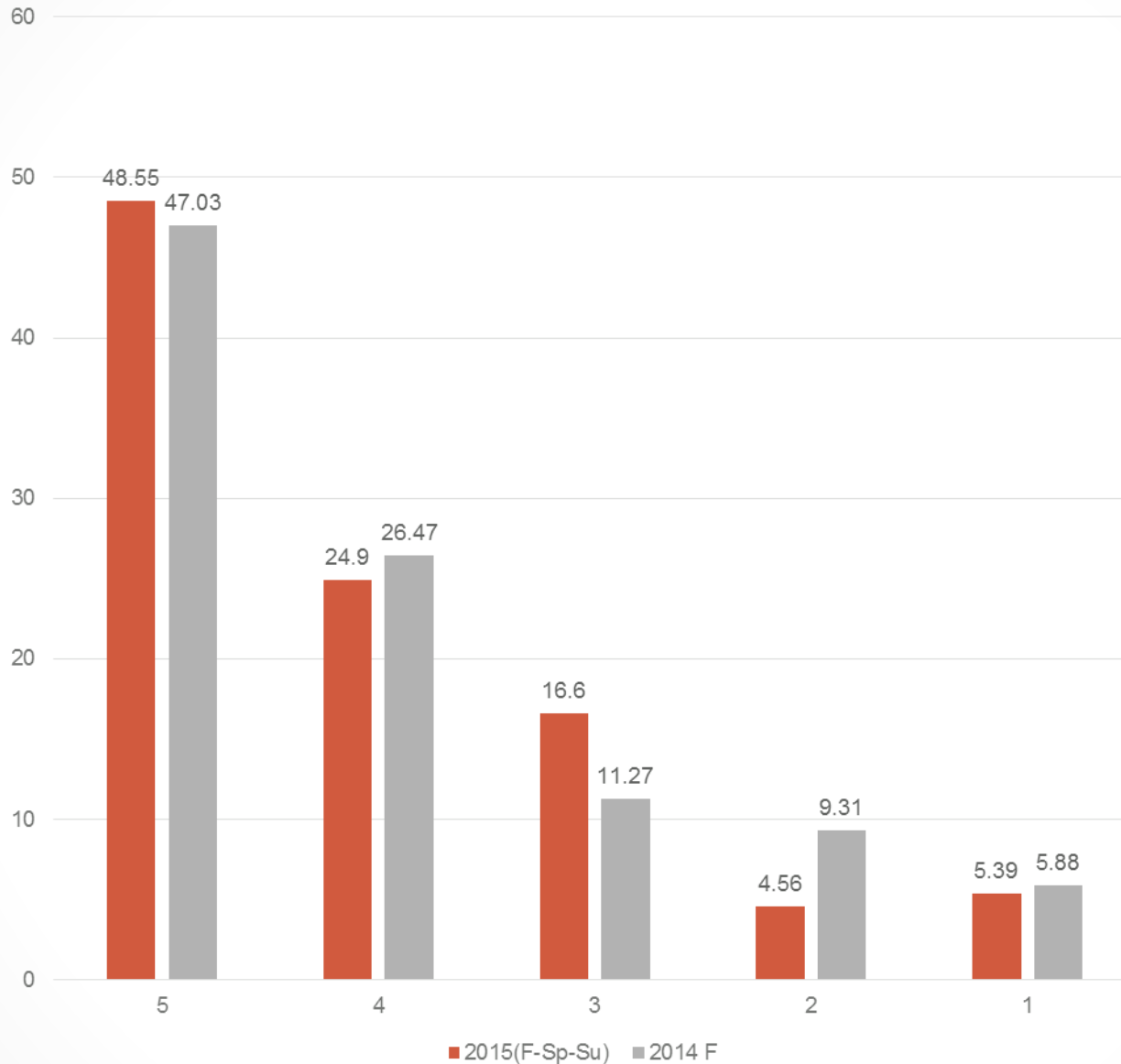
Total

Scale : 1-Not Interesting at all

.....

5-Very Interesting





C1.5. How interesting are the following elements of international credit mobility to your institution? [a. Staff Mobility – Incoming Staff]

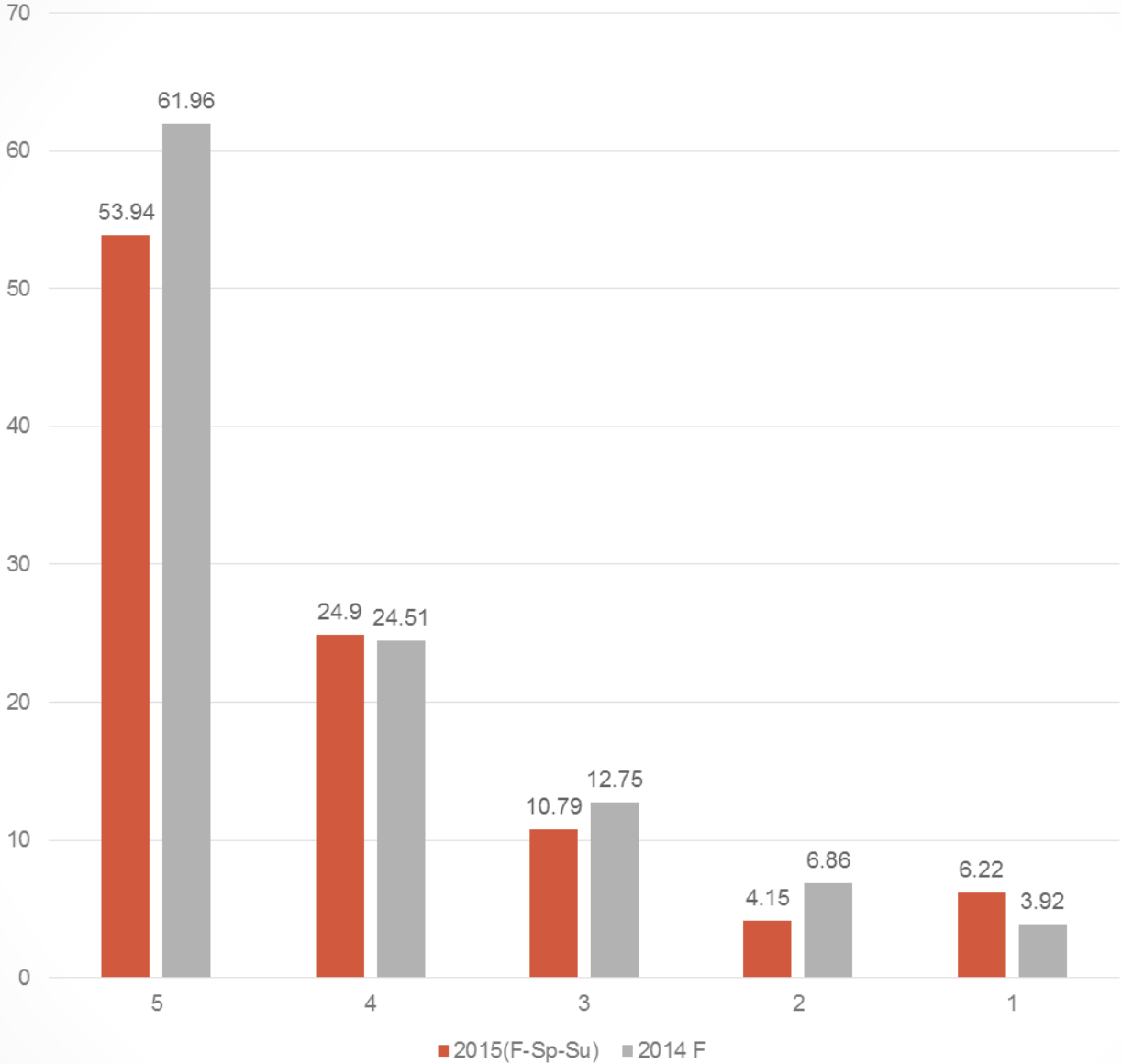
Total

Scale : 1-Not Interesting at all

.....

5-Very Interesting

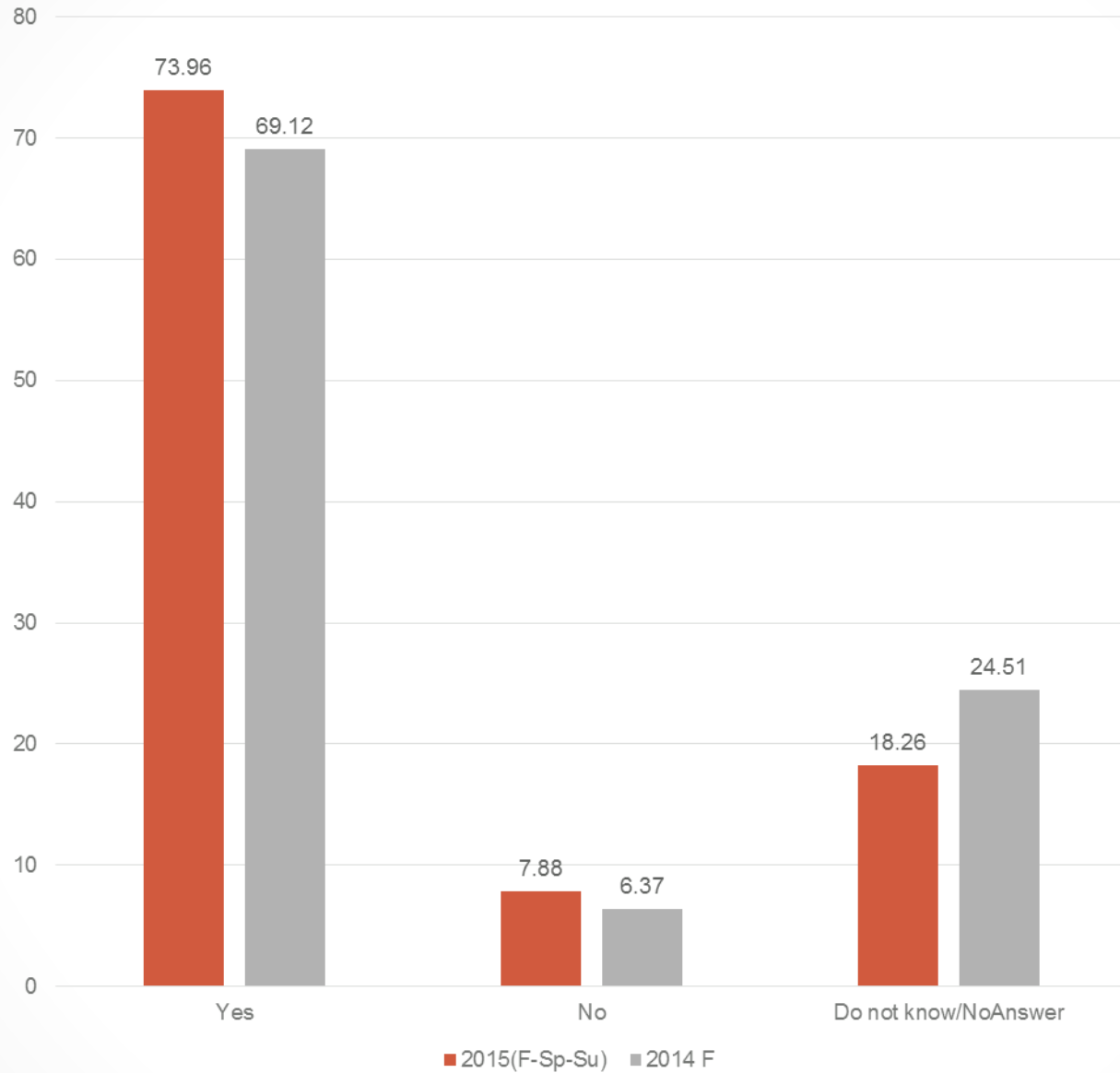
C1.5. How interesting are the following elements of international credit mobility to your institution? [a. Staff Mobility – Outgoing Staff]



Total

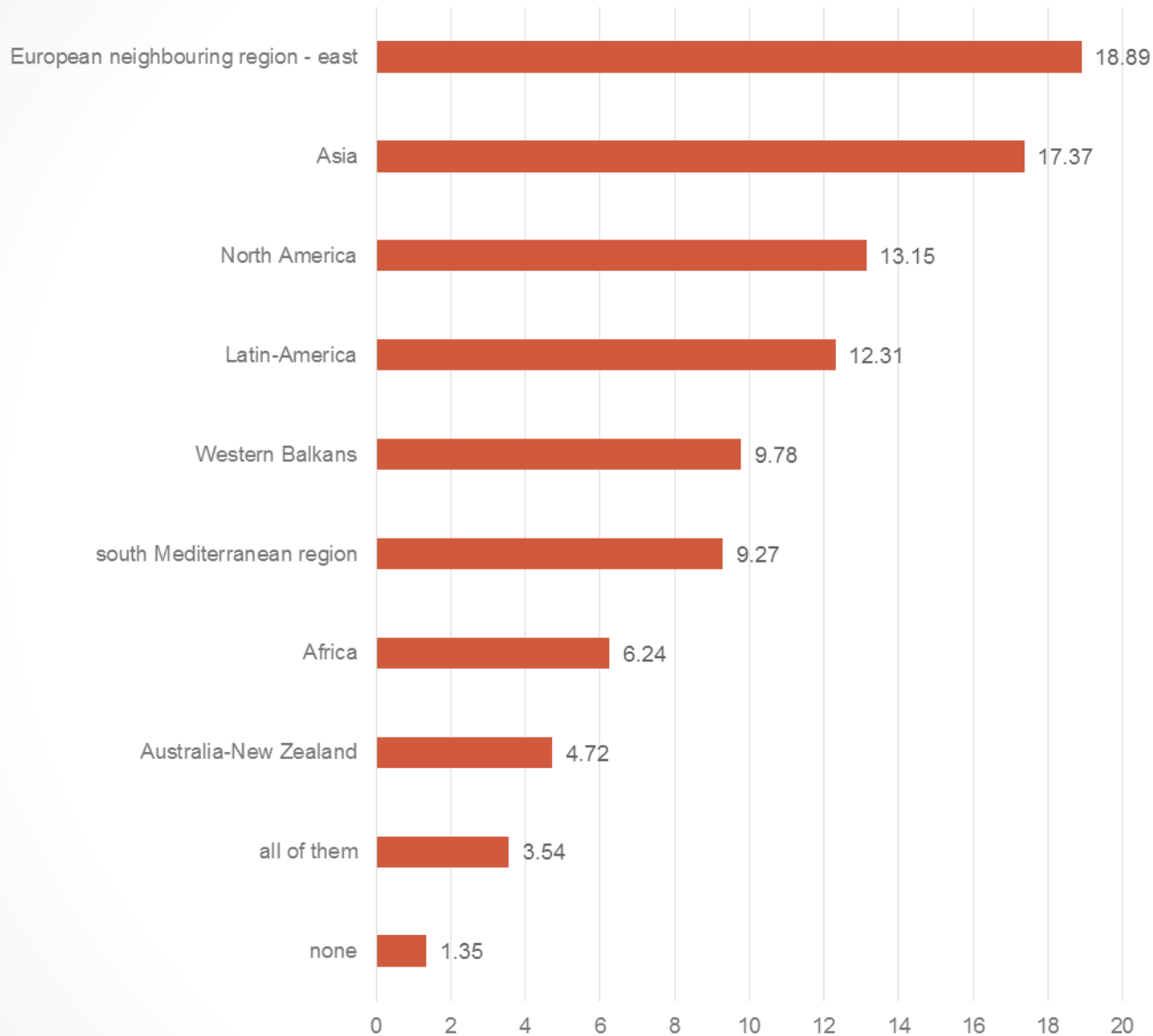
Scale : 1-Not Interesting at all

 5-Very Interesting



C1.6. Is international credit mobility relevant for your internationalization strategy (if applicable)?

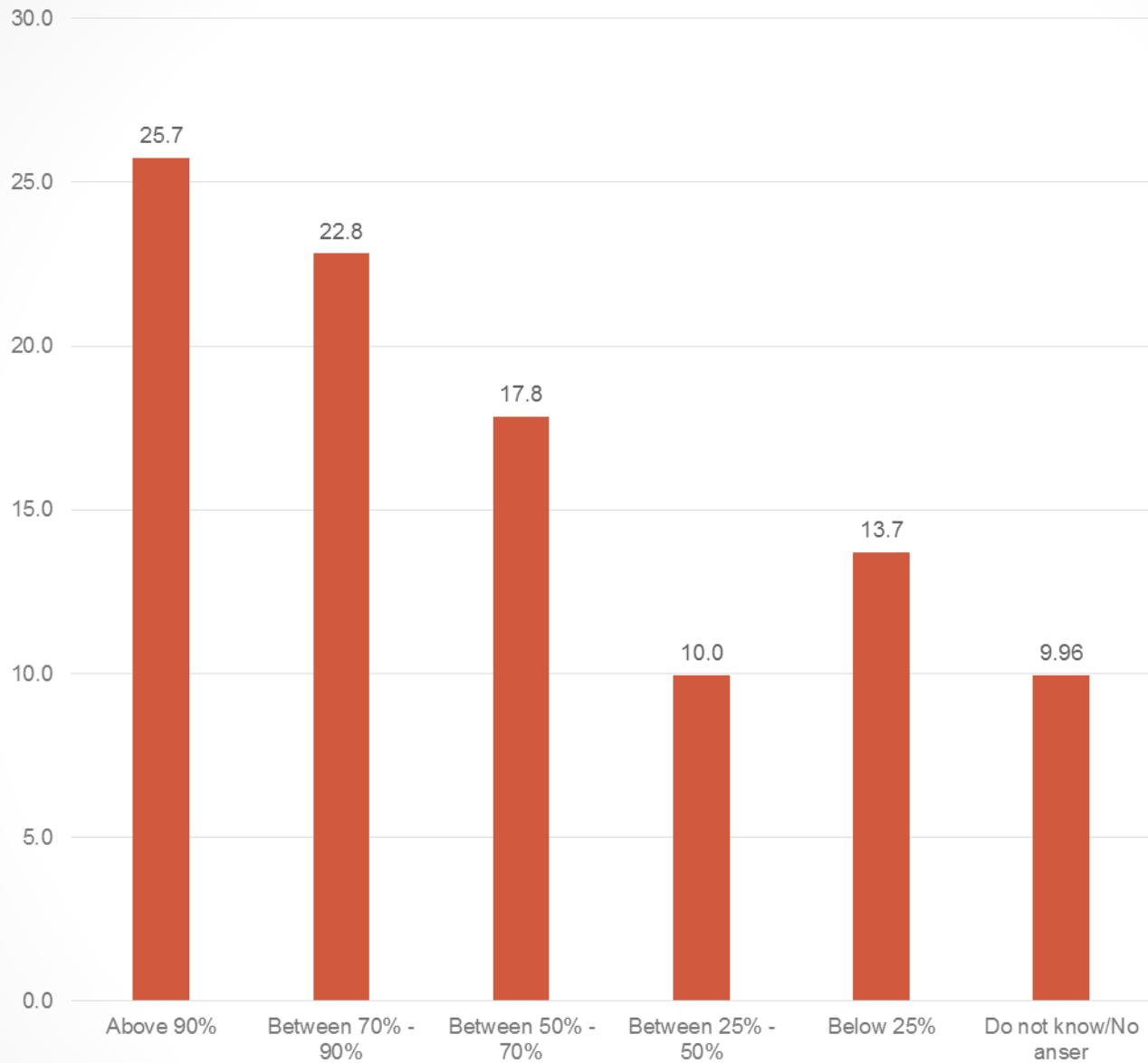
Total



C1.7. Which regions are most relevant for you to cooperate with?

Total

C2. MOBILITY BETWEEN PROGRAMME AND PARTNER COUNTRIES (KA107) - FUNDING



C2.1. Among all your planned international mobilities (student/staff) for the current 2015-2016 academic year, how many are expected to be funded with ERASMUS+ EU funds?

Total

Thank you!
