



EUROPEAN COMMISSION

With the cooperation of the European Commission

ERASMUS+ BAROMETER

2020

2015-2019 Comparative Survey Results

Presented by

Dr. Gregory Makrides, EAEC President

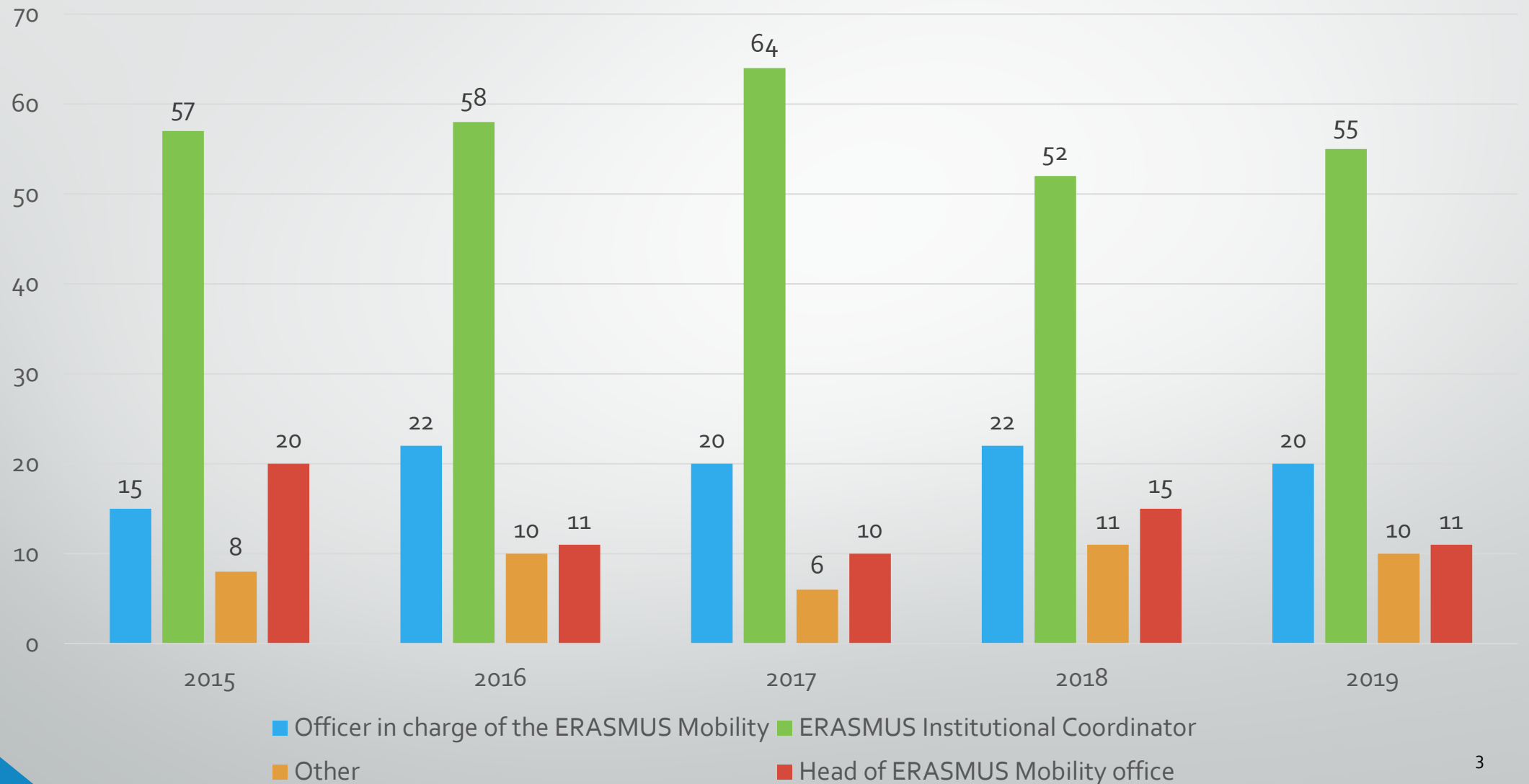
& Emma Zeniou, Member of the EAEC Board





SURVEY DEMOGRAPHICS

PARTICIPANTS OF THE ONLINE SURVEY ARE:





BI.MOBILITY BETWEEN PROGRAMME COUNTRIES

NUMBER OF STUDENTS REGISTERED

	Mean	Std. Deviation
2015		
Number of students registered in 2014-2015 Academic Year: [First Cycle]	9721	12456
Number of students registered in 2014-2015 Academic Year: [Second Cycle]	2959	3909
Number of students registered in 2014-2015 Academic Year: [Third Cycle]	700	1461
2016	Mean	Std. Deviation
Number of students registered in 2015-2016 Academic Year: [First Cycle]	7515	10698
Number of students registered in 2015-2016 Academic Year: [Second Cycle]	2745	6044
Number of students registered in 2015-2016 Academic Year: [Third Cycle]	589	1467
2017	Mean	Std. Deviation
Number of students registered in 2016-2017 Academic Year: [First Cycle]	9204	12006
Number of students registered in 2016-2017 Academic Year: [Second Cycle]	3294	5902
Number of students registered in 2016-2017 Academic Year: [Third Cycle]	597	941
2018	Mean	Std. Deviation
Number of students registered in 2017-2018 Academic Year: [First Cycle]	6219	10011
Number of students registered in 2017-2018 Academic Year: [Second Cycle]	2311	3962
Number of students registered in 2017-2018 Academic Year: [Third Cycle]	617	1386
2019	Mean	Std. Deviation
Number of students registered in 2018-2019 Academic Year: [First Cycle]	6111	8493
Number of students registered in 2018-2019 Academic Year: [Second Cycle]	2264	3426
Number of students registered in 2018-2019 Academic Year: [Third Cycle]	528	1028

NUMBER OF ERASMUS REALIZED MOBILITIES PER ACADEMIC YEAR

2015

	Mean	Std. Deviation
Number of ERASMUS realized mobilities in the Academic Year 2014-2015, including the summer of 2015: [SMS (studies):]	200	212
Number of ERASMUS realized mobilities in the Academic Year 2014-2015, including the summer of 2015: [SMP (traineeships):]	63	48

2016

	Mean	Std. Deviation
Number of ERASMUS realized mobilities in the Academic Year 2015-2016, including the summer of 2016: [SMS (studies):]	191	341
Number of ERASMUS realized mobilities in the Academic Year 2015-2016, including the summer of 2016: [SMP (traineeships):]	60	110

2017

	Mean	Std. Deviation
Number of ERASMUS realized mobilities in the Academic Year 2016-2017, including the summer of 2017: [SMS (studies):]	164	195
Number of ERASMUS realized mobilities in the Academic Year 2016-2017, including the summer of 2017: [SMP (traineeships):]	62	74

2018

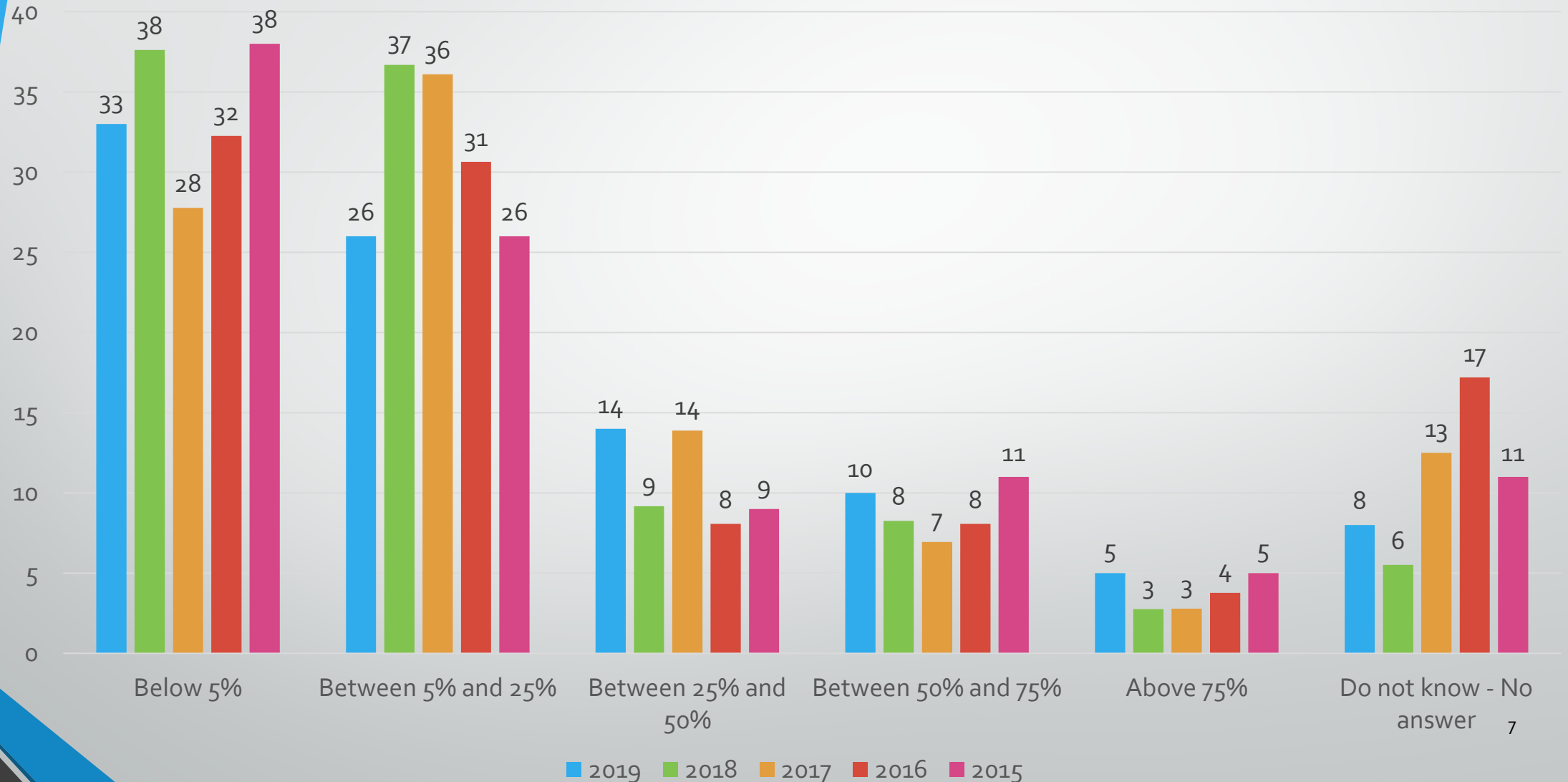
	Mean	Std. Deviation
Number of ERASMUS realized mobilities in the Academic Year 2017-2018, including the summer of 2018: [SMS (studies):]	167	242
Number of ERASMUS realized mobilities in the Academic Year 2017-2018, including the summer of 2018: [SMP (traineeships):]	56	63

2019

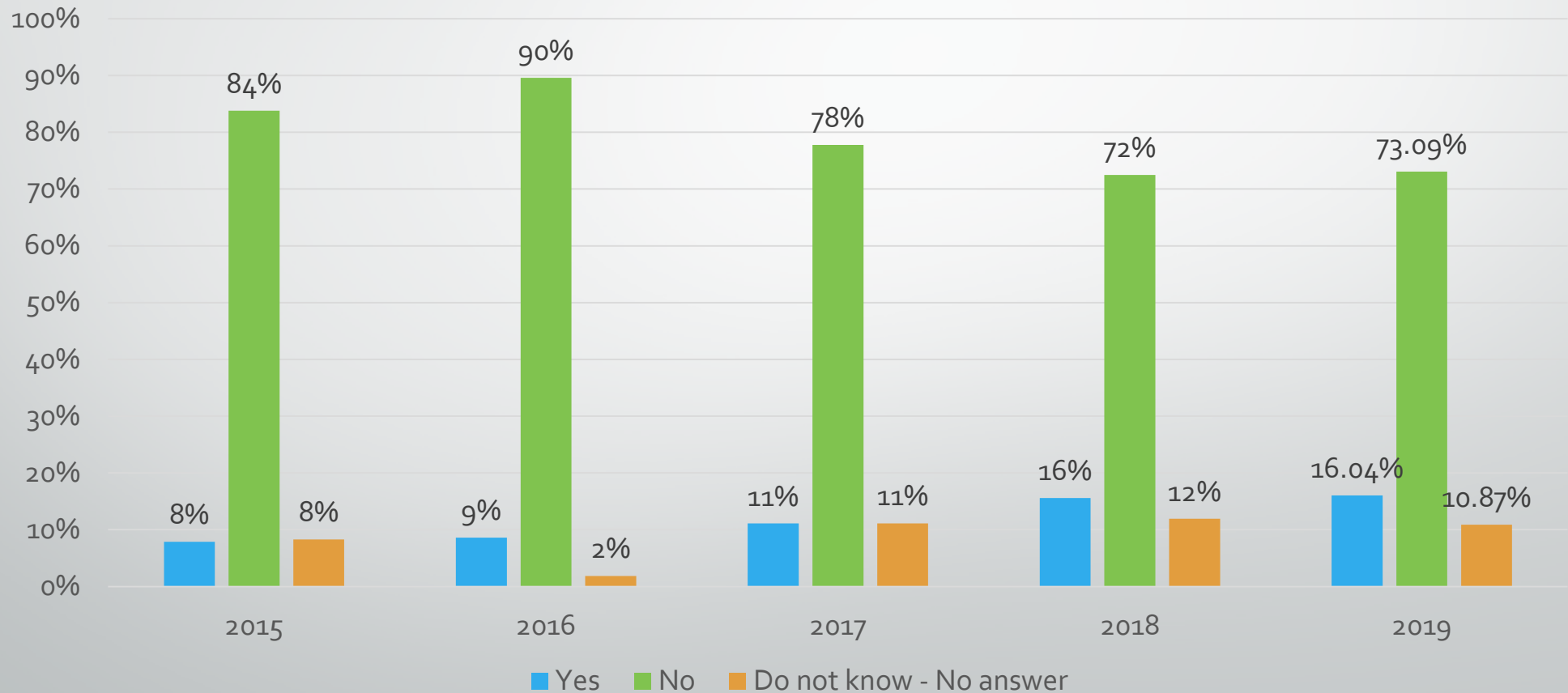
	Mean	Std. Deviation
Number of ERASMUS realized mobilities in the Academic Year 2018-2019, including the summer of 2019: [SMS (studies):]	144	225
Number of ERASMUS realized mobilities in the Academic Year 2018-2019, including the summer of 2019: [SMP (traineeships):]	53	69

BI.I. EVALUATE THE INTEREST OF STUDENTS IN YOUR INSTITUTION TO UNDERTAKE A TRAINEESHIP AS RECENT GRADUATES

(NUMBERS ON TOP OF BARS INDICATE NUMBER OF HEIS THAT REPLIED FOR EACH OPTION)



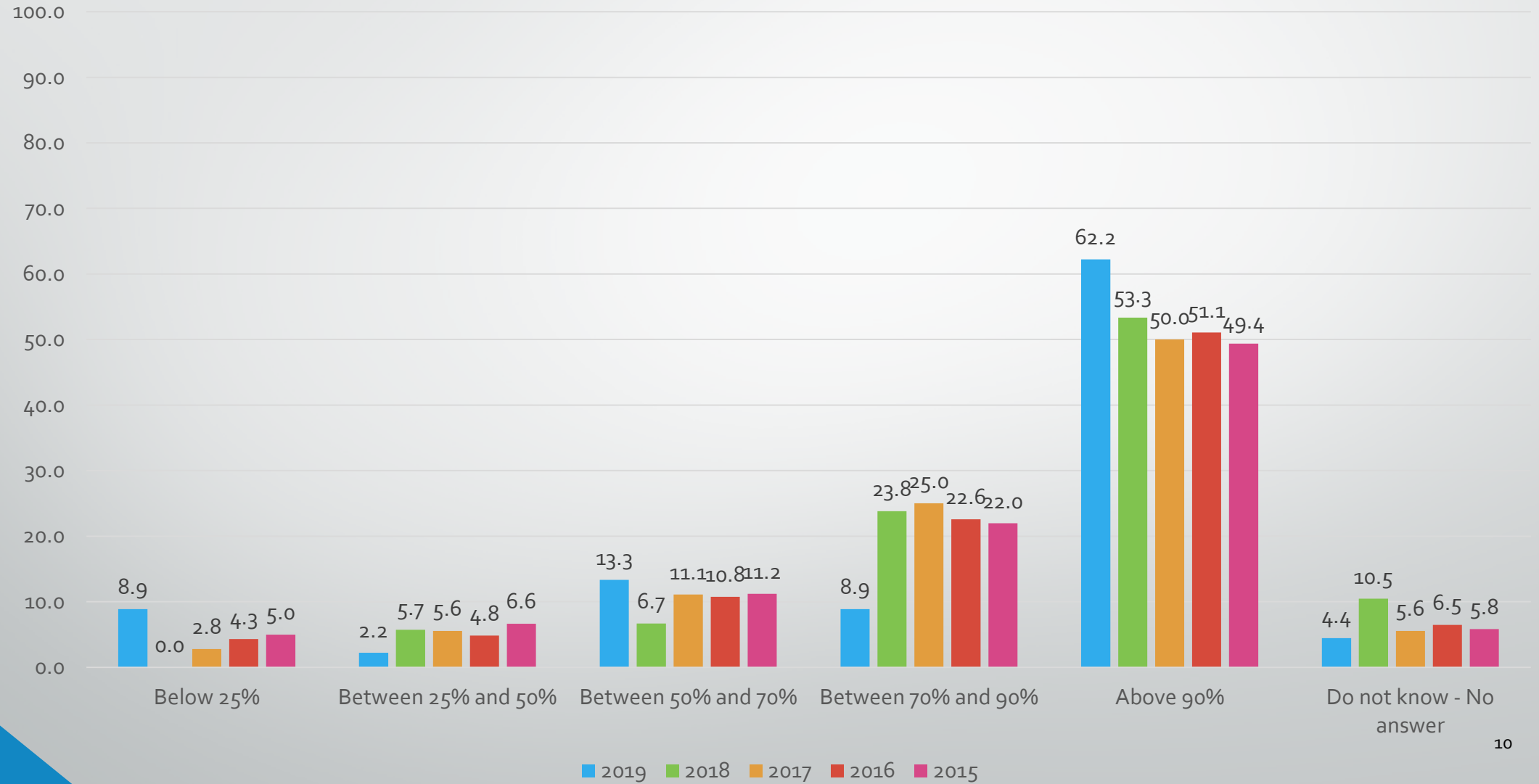
BI.2. HAS YOUR INSTITUTION RECEIVED MORE DEMANDS FROM PARTICIPANTS WITH SPECIAL NEEDS (SMS AND SMP) COMPARED THE PREVIOUS CALLS?



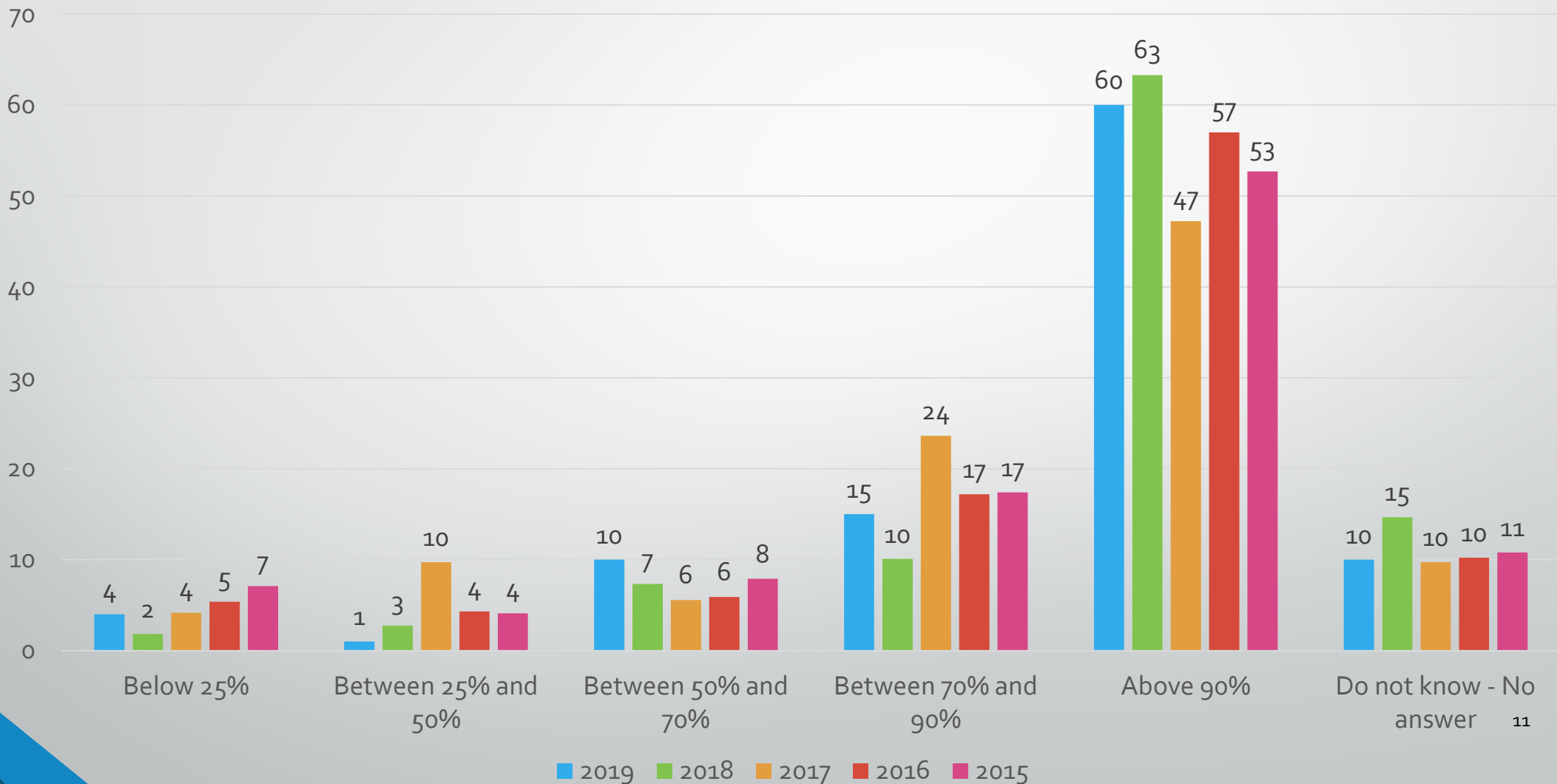


B2. PARTICIPATION AND FUNDING

B2.1. AMONG ALL THE STUDENTS WHO APPLIED FOR OUTGOING ERASMUS STUDIES, WHAT PROPORTION HAS BEEN SELECTED FOR PARTICIPATION IN THE PROGRAMME?



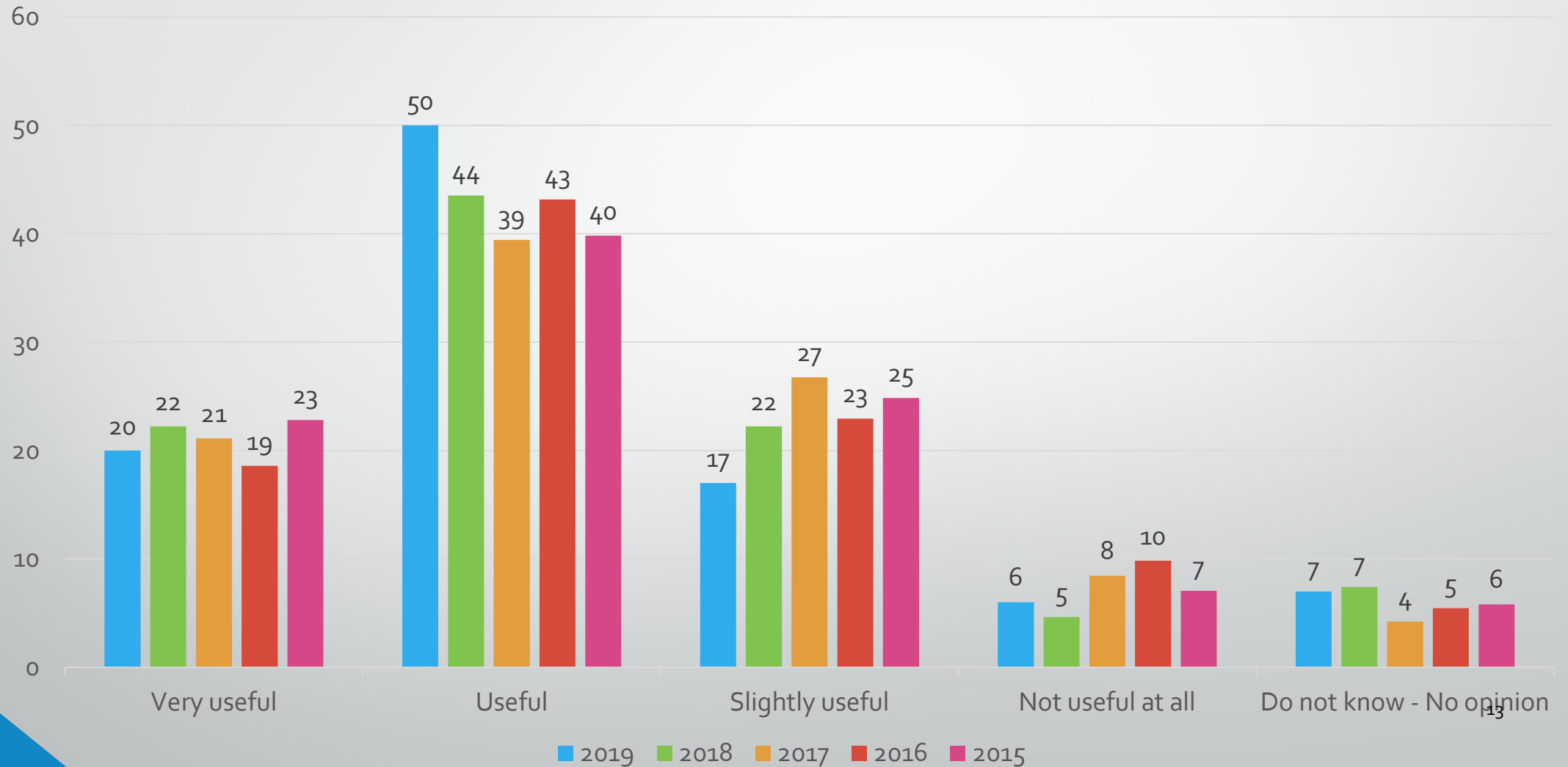
B2.2. AMONG ALL THE STUDENTS WHO APPLIED FOR OUTGOING ERASMUS TRAINEESHIPS, WHAT PROPORTION HAS BEEN SELECTED FOR PARTICIPATION IN THE PROGRAMME?





B3. OLS (ONLINE LINGUISTIC SUPPORT)

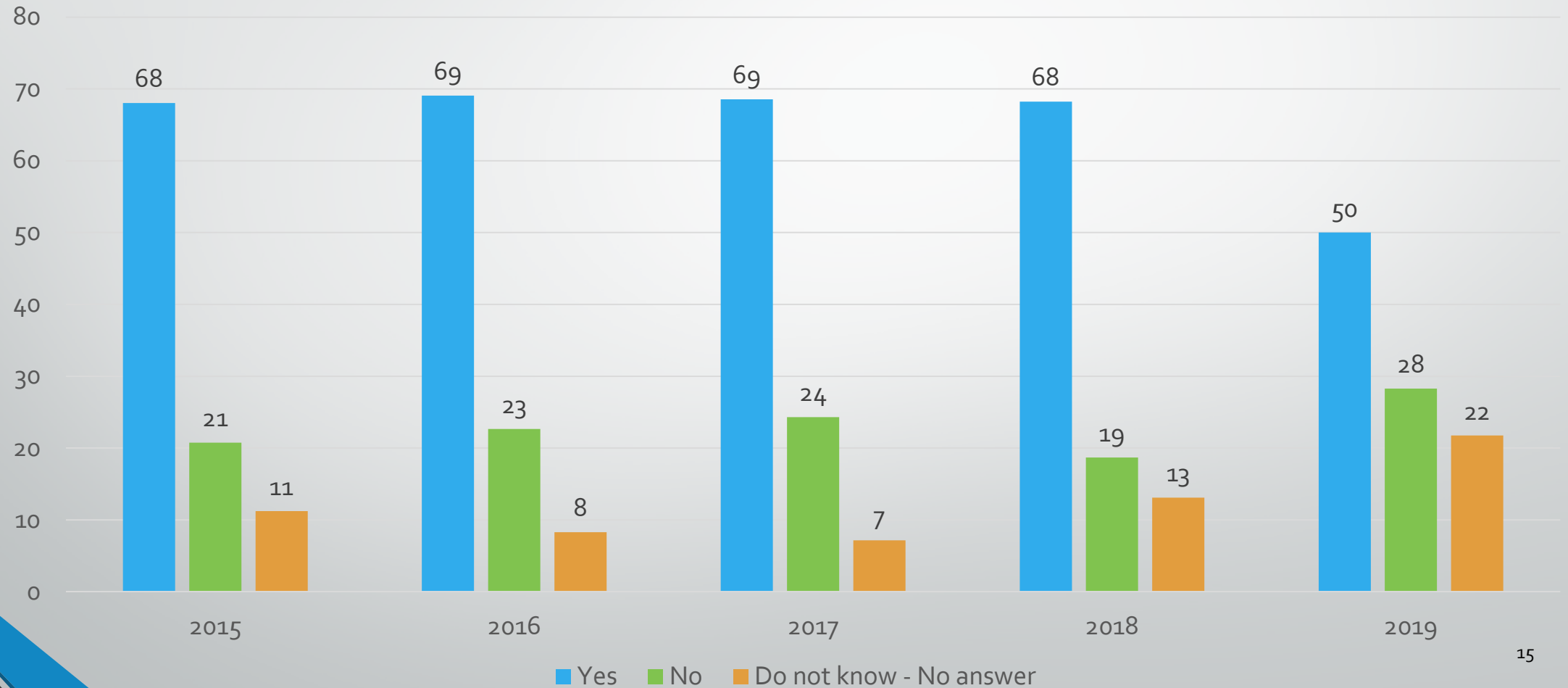
B3.1. IN YOUR OPINION, HOW USEFUL IS THE OLS LANGUAGE ASSESSMENT?





B4.LEARNING AGREEMENT

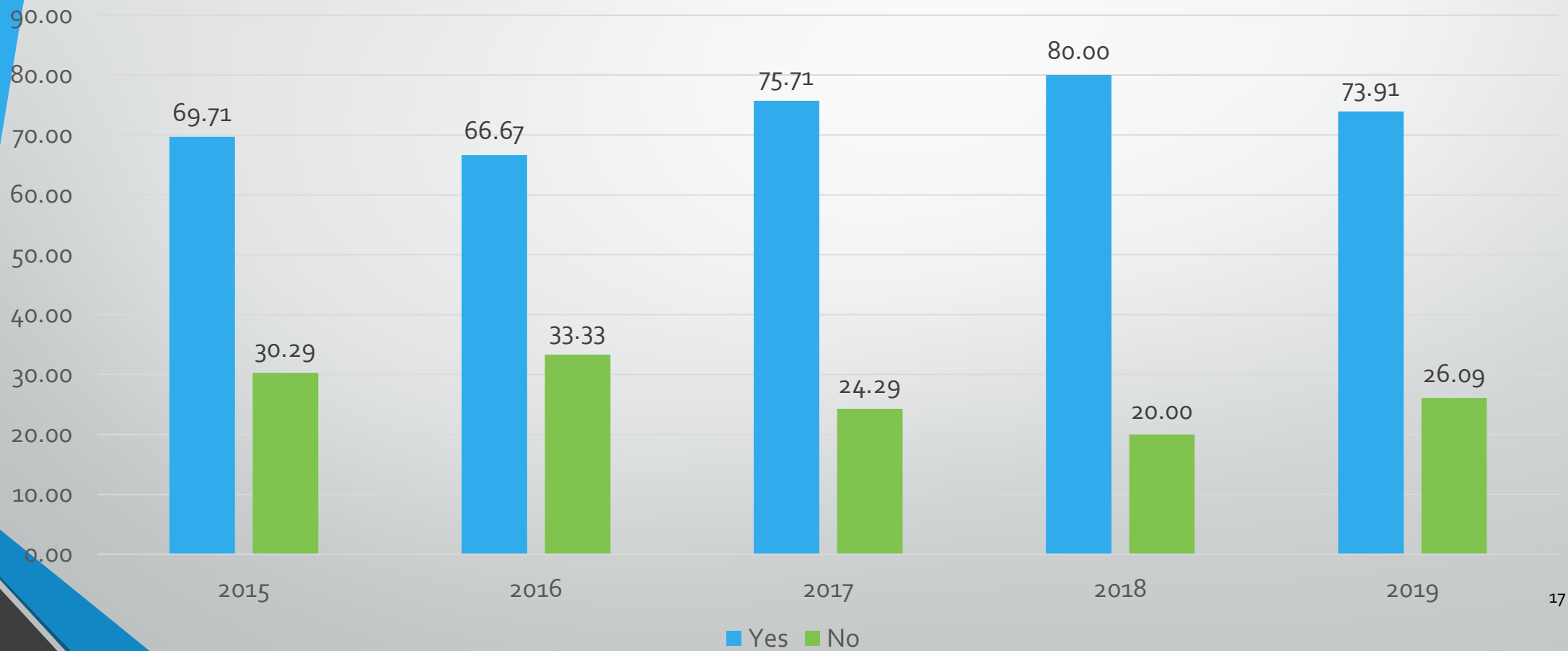
B4.1. DID YOUR INSTITUTION MANAGE TO UPDATE ITS COURSE CATALOGUE BEFORE THE END OF THE PREVIOUS ACADEMIC YEAR?



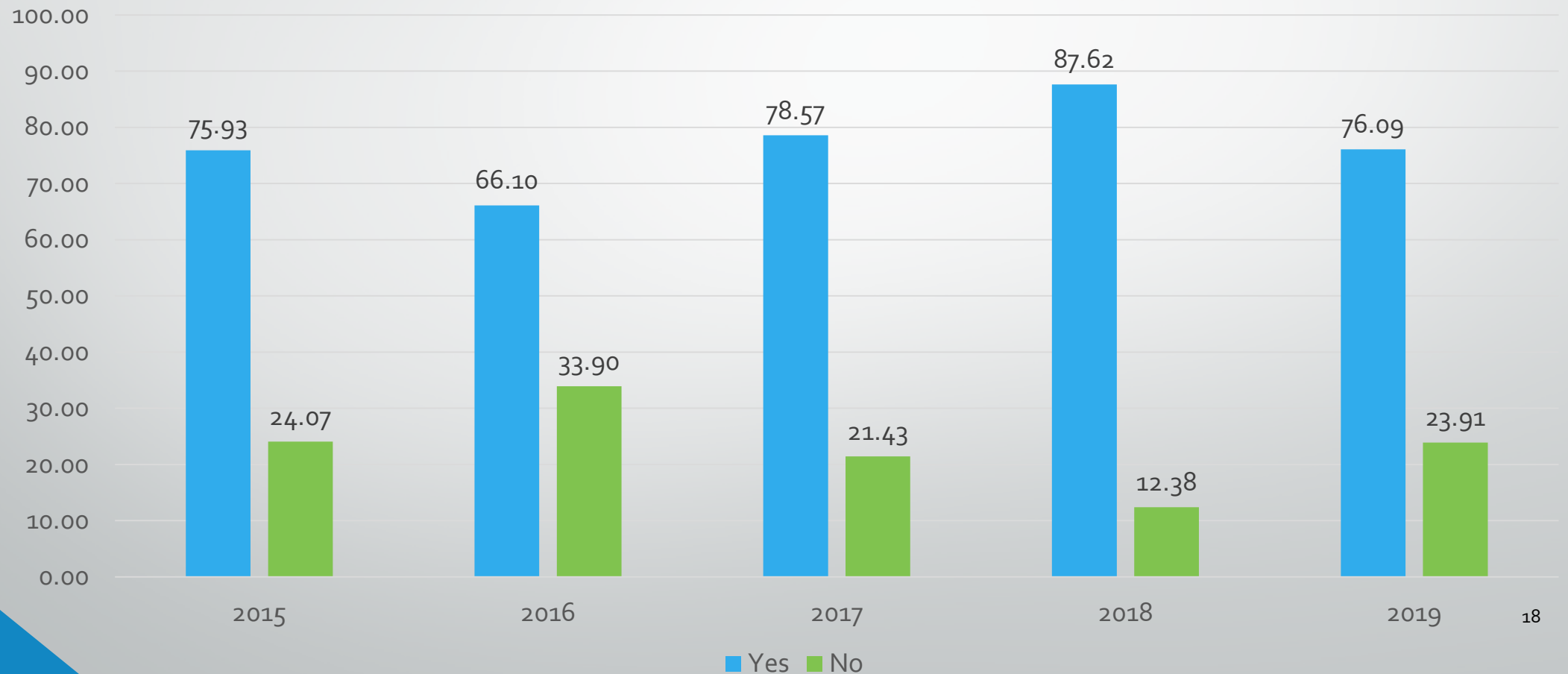


B7. RECOGNITION

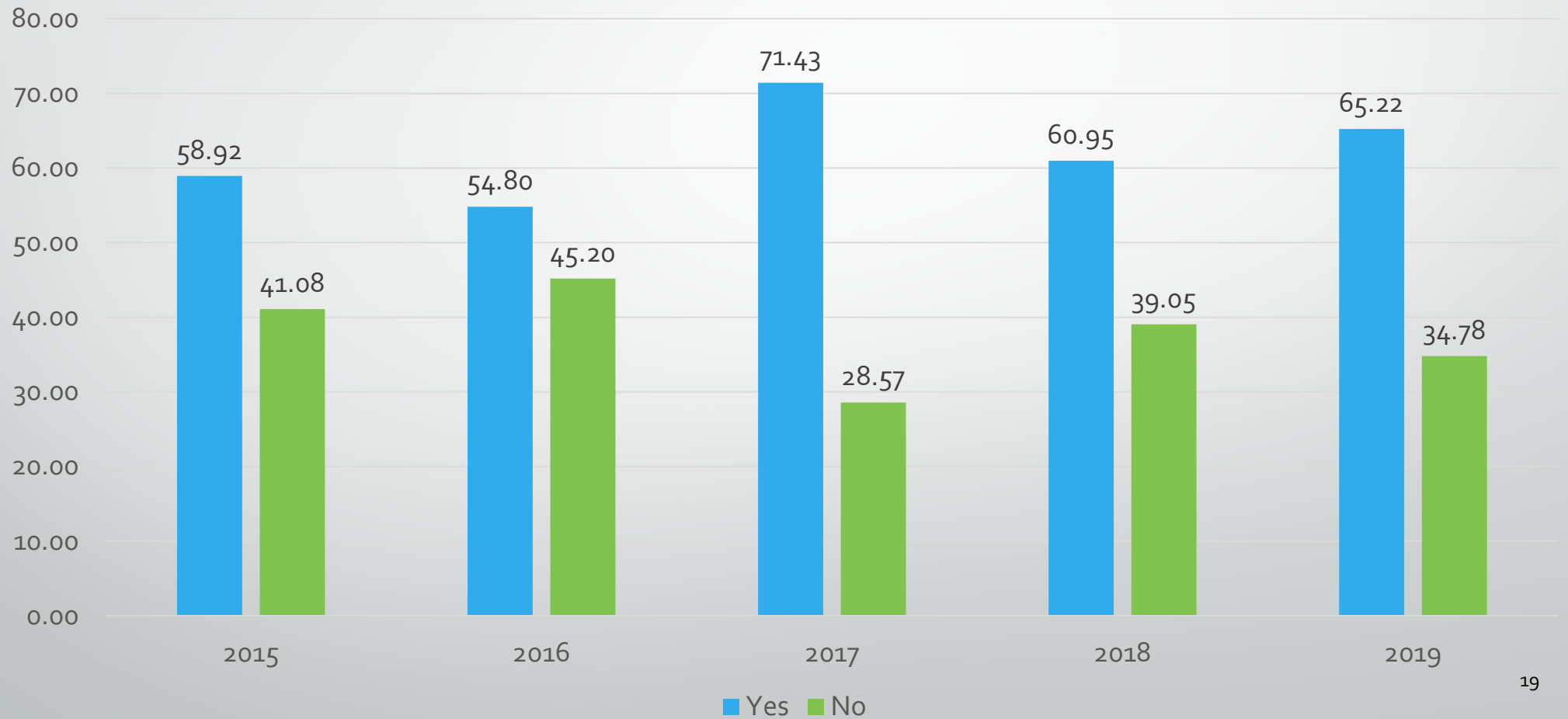
B7.1. DOES YOUR INSTITUTION USE ECTS GRADE DISTRIBUTION TABLES?



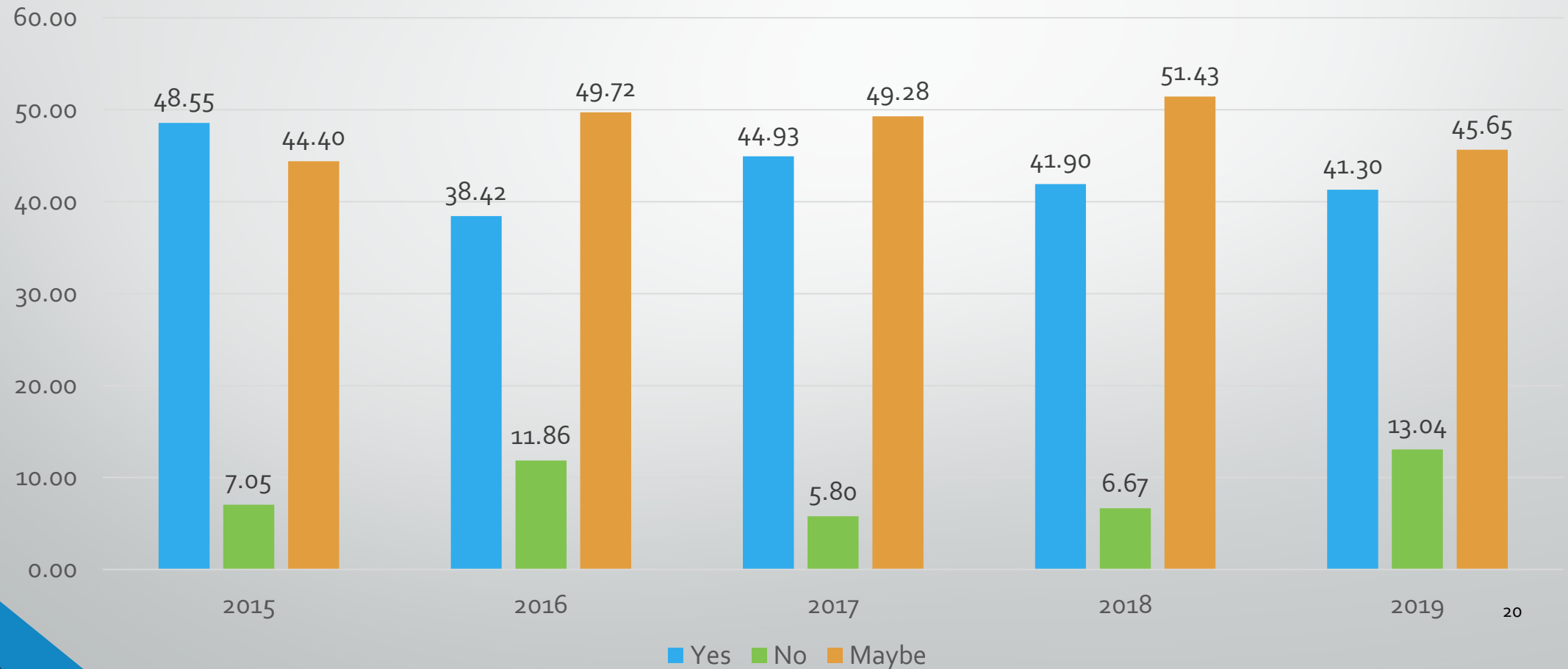
B7.2. DOES YOUR INSTITUTION CONVERT THE GRADES OBTAINED ABROAD BY MOBILE STUDENTS TO HOME GRADE DISTRIBUTION TABLE RESULTS?



B7.3. IS THERE ROOM FOR PERSONAL INTERPRETATION AND/OR ADJUSTMENT OF GRADES IN THE PROCESS OF GRADE CONVERSION?



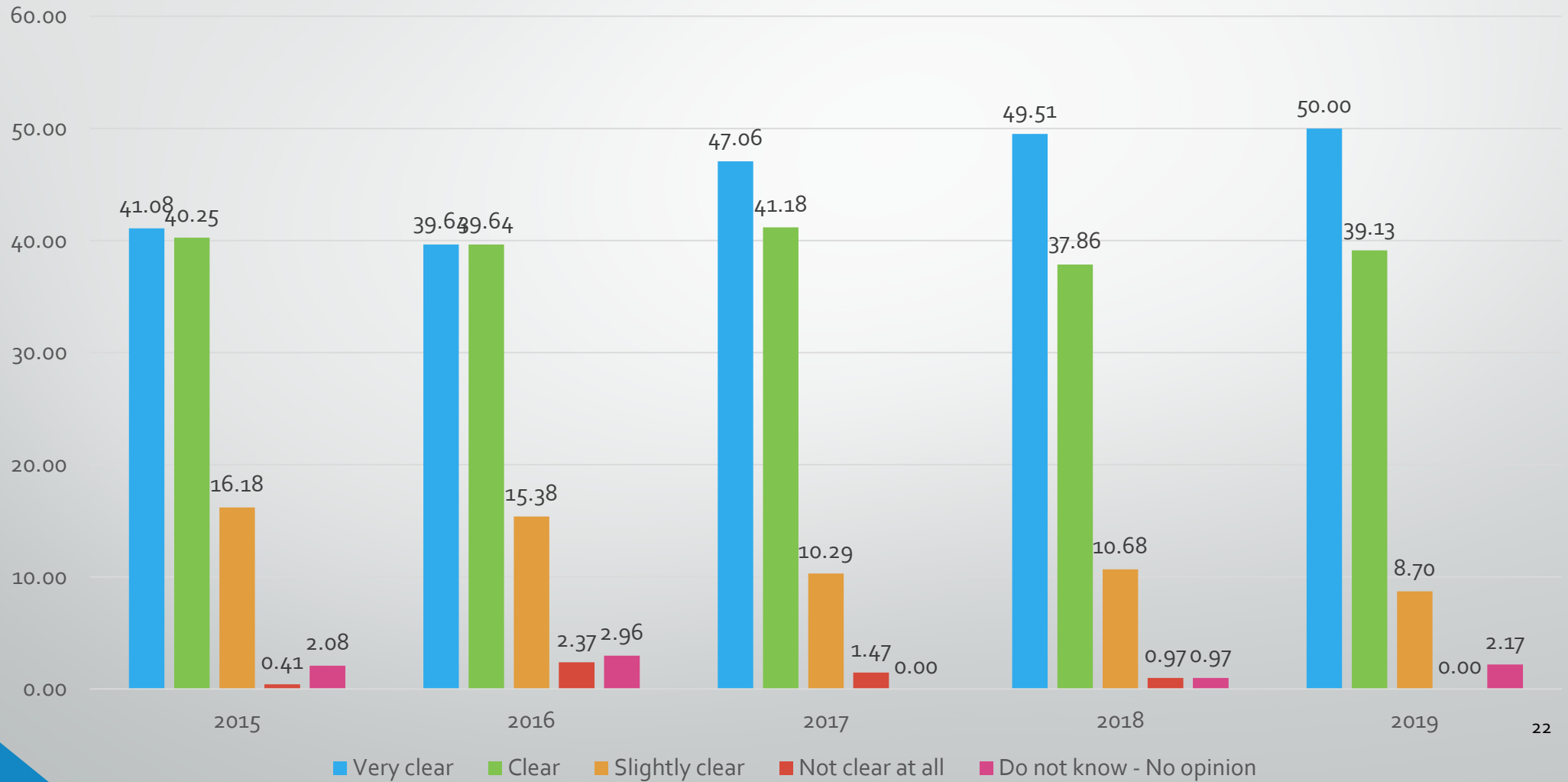
B7.4. DOES YOUR INSTITUTION INTEND TO PRODUCE ECTS GRADE DISTRIBUTION TABLES IN THE NEAR FUTURE AS ADVOCATED BY THE 2015 ECTS USERS' GUIDE?



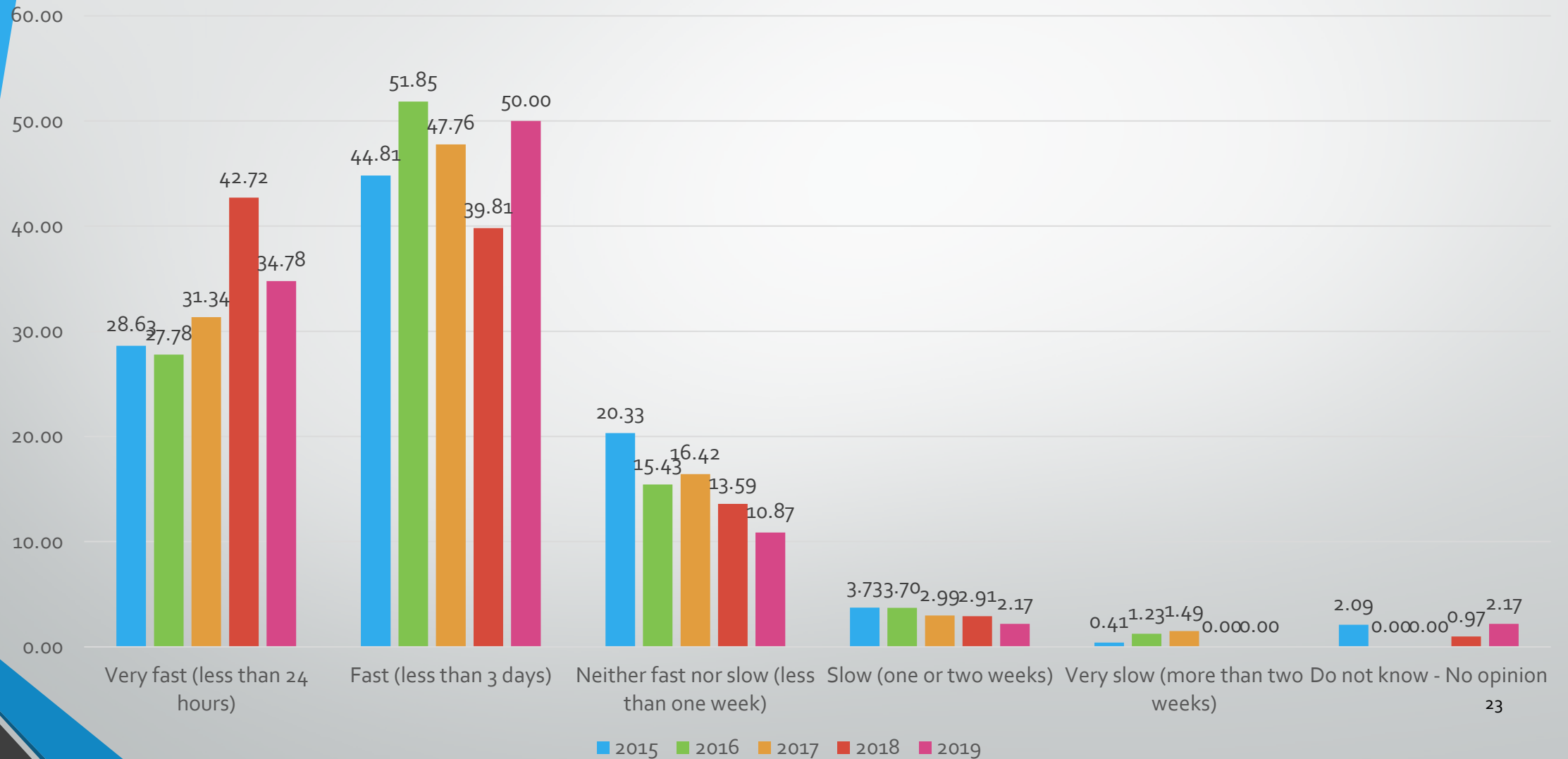



B9. OTHER

B9.3. DO YOU GET CLEAR RESPONSES FROM YOUR NATIONAL AGENCY?



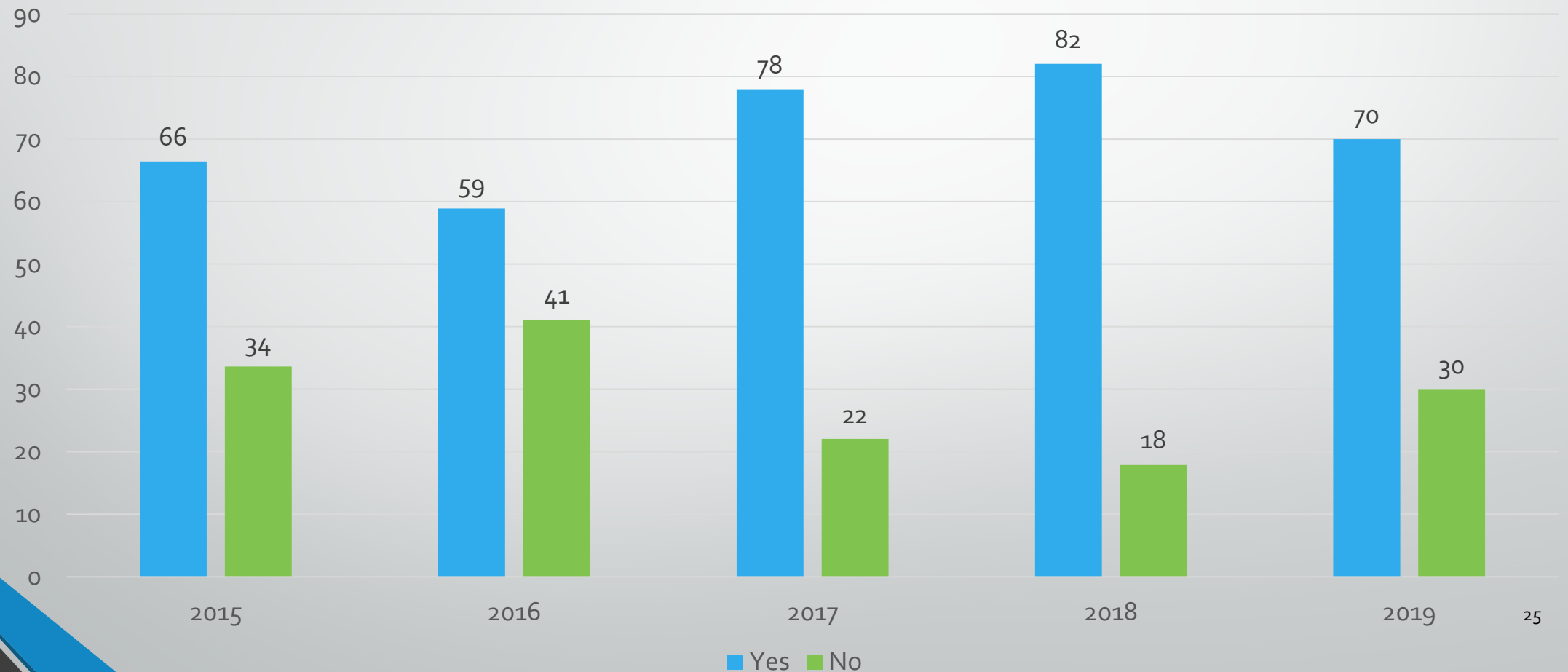
B9.4. DO YOU GET FAST RESPONSES FROM YOUR NATIONAL AGENCY?



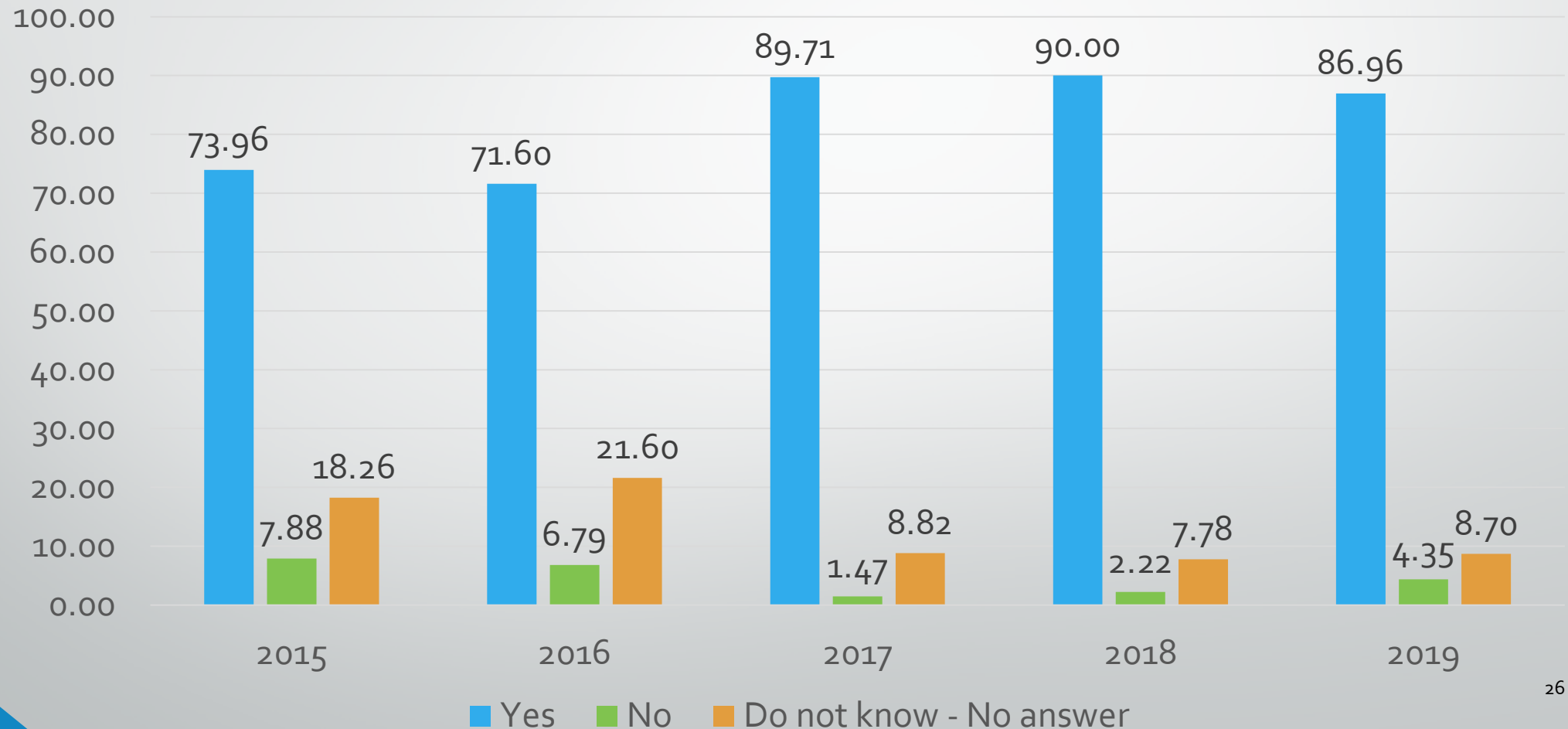


CI. MOBILITY BETWEEN PROGRAMME
AND PARTNER COUNTRIES (KA107) -
INTEREST DEMAND

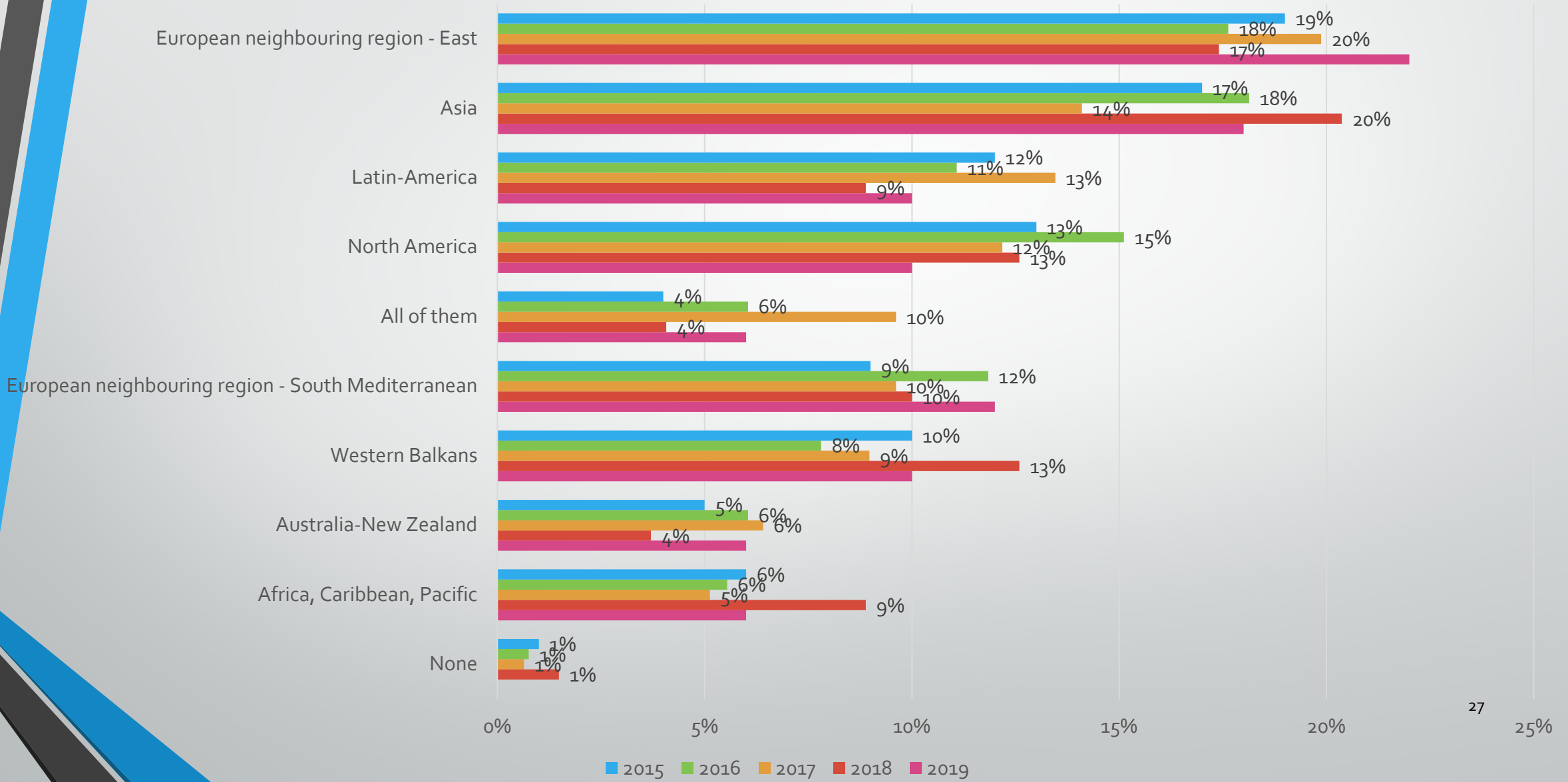
CI.3. DID YOU APPLY FOR INTERNATIONAL CREDIT MOBILITY?



CI.6. IS INTERNATIONAL CREDIT MOBILITY RELEVANT FOR YOUR INTERNATIONALIZATION STRATEGY (IF APPLICABLE)?



CI.8. WHICH REGIONS ARE MOST RELEVANT FOR YOU TO COOPERATE WITH?





THANK YOU!